

The University of Southern Mississippi  
**The Aquila Digital Community**

---

Student Brochures

College of Nursing and Health Professions

---

2017

## Breast Cancer: What Young Women Need to Know

Franki Hubbard  
*University of Southern Mississippi*

Follow this and additional works at: [https://aquila.usm.edu/student\\_brochures](https://aquila.usm.edu/student_brochures)



Part of the [Other Nursing Commons](#), and the [Public Health and Community Nursing Commons](#)

---

### Recommended Citation

Hubbard, F. (2017). Breast Cancer: What Young Women Need to Know. [Health education brochure]. College of Nursing Student Brochures (MS# 1007). The Aquila Digital Community, The University of Southern Mississippi. Retrieved from [https://aquila.usm.edu/student\\_brochures/7](https://aquila.usm.edu/student_brochures/7).

This Book is brought to you for free and open access by the College of Nursing and Health Professions at The Aquila Digital Community. It has been accepted for inclusion in Student Brochures by an authorized administrator of The Aquila Digital Community. For more information, please contact [aquilastaff@usm.edu](mailto:aquilastaff@usm.edu).

## True or False?

1 in 8 women will develop Breast Cancer in their lifetime.

You should begin doing self-exams at the age of 18.

\*Answers found on back page\*

## When should I perform a Self-Exam?

You should perform a self-exam once a month at the same time of the month. After your period is a good time. Remember to position yourself the same way every time.



Bright Pink states: *As a young woman, you may not think this applies to you. But when it comes to detection, 80% of breast cancers in young women are self-discovered. They are later confirmed by a doctor.*

Quiz: T/T

## References

National Breast Cancer Foundation, INC. (2016). Breast Self-Exam. Retrieved from <http://www.nationalbreastcancer.org/breast-self-exam>

Bright Pink. (2017). Prevention and Early Detection. Retrieved from <https://www.brightpink.org/what-you-need-to-know/start-here>

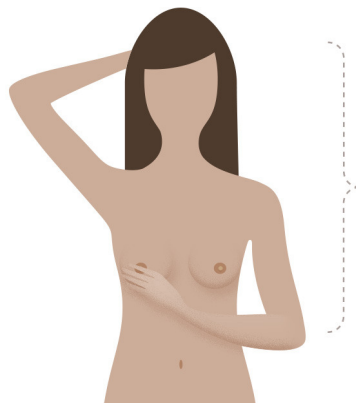
# Breast Cancer: What young women need to know

Patient education brochure  
developed by Franki Hubbard  
Reading Level: 5.8



THE UNIVERSITY OF  
SOUTHERN MISSISSIPPI

COLLEGE OF NURSING



x12

# Know your body

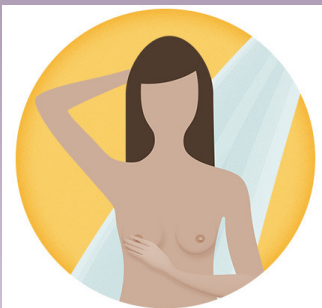
Early detection is key. It can mean the difference between life and death. Knowing your body is most important to early detection. Be mindful and pay attention to changes. Notify your doctor immediately about any abnormalities.

Jess from [brightpink.org](http://brightpink.org) says, "I fall in the 80% category. I detected the lump myself and got it checked out the following day. Knowing your body and when something's not right can save your life!"

## Self Breast Exam

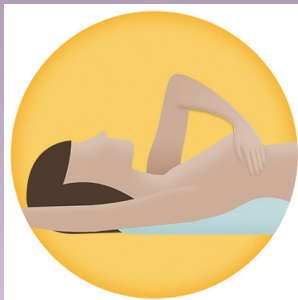
### 1) In the Shower

Using the pads of your fingers, move around your entire breast in a circular pattern moving from the outside to the center, checking the entire breast and armpit area. Check both breasts feeling for any lump, thickening, or hardened knot.



### 2) Lying Down

Lie down and place a pillow under your right shoulder and your right arm behind your head. Use your left hand, move the pads of your fingers around your right breast gently in small circular motions. Use firm pressure. Repeat these steps for your left breast.



### 3) In Front of a Mirror

Visually inspect your breasts with your arms at your sides. Check nipples for discharge. Next, raise your arms high overhead.

