

The University of Southern Mississippi  
**The Aquila Digital Community**

---

University Libraries Workshops and  
Presentations

University Libraries

---

10-2017

## Using Stories and Statistics to Advocate for Support

Elizabeth La Beaud

*University of Southern Mississippi*, [Elizabeth.LaBeaud@usm.edu](mailto:Elizabeth.LaBeaud@usm.edu)

Follow this and additional works at: [https://aquila.usm.edu/libraries\\_workshops](https://aquila.usm.edu/libraries_workshops)

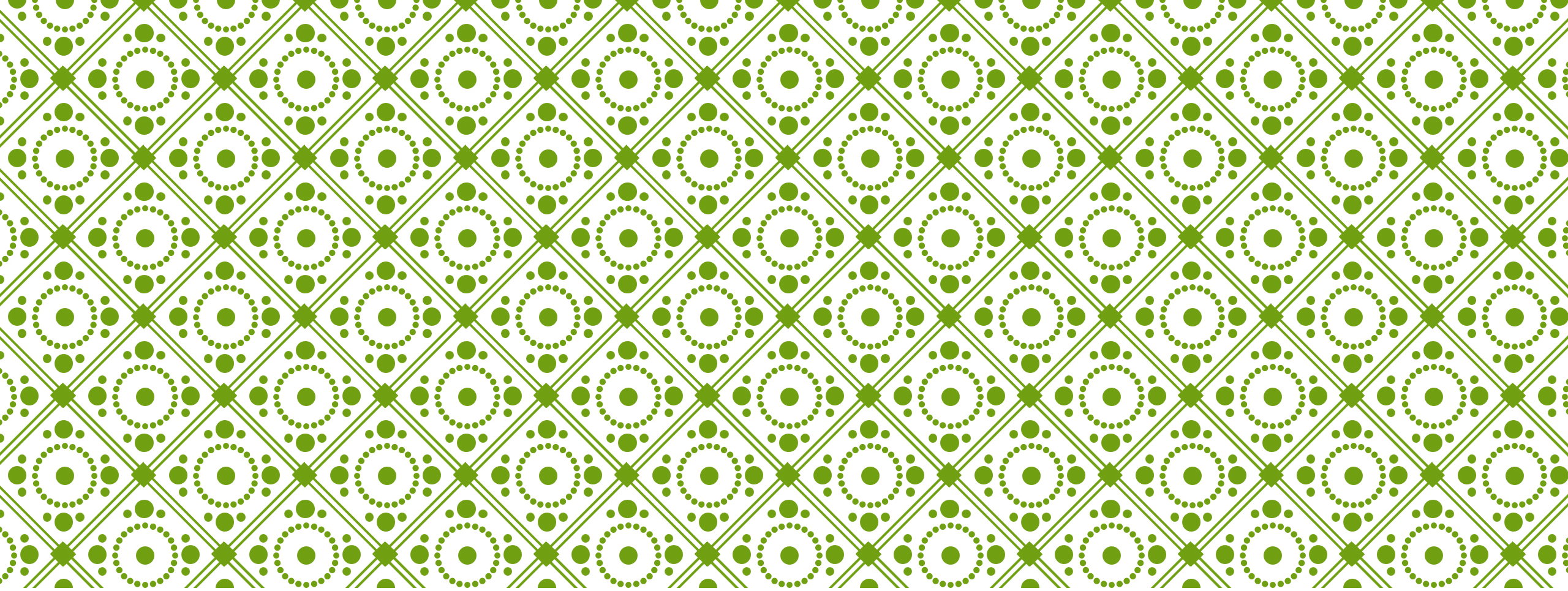
---

### Recommended Citation

La Beaud, Elizabeth, "Using Stories and Statistics to Advocate for Support" (2017). *University Libraries Workshops and Presentations*. 10.

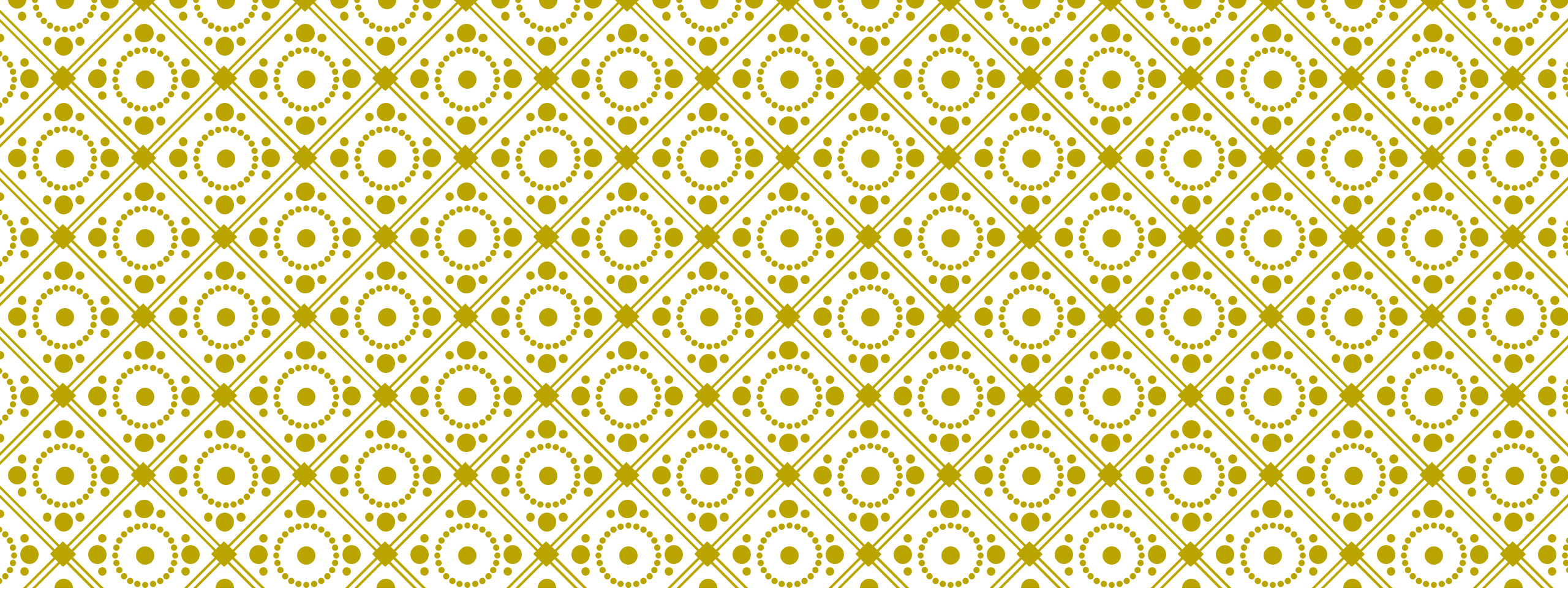
[https://aquila.usm.edu/libraries\\_workshops/10](https://aquila.usm.edu/libraries_workshops/10)

This Other is brought to you for free and open access by the University Libraries at The Aquila Digital Community. It has been accepted for inclusion in University Libraries Workshops and Presentations by an authorized administrator of The Aquila Digital Community. For more information, please contact [aquilastaff@usm.edu](mailto:aquilastaff@usm.edu).



# USING STORIES AND STATISTICS TO ADVOCATE FOR SUPPORT

Elizabeth La Beaud  
Digital Lab Manager  
University of Southern Mississippi



**KNOW YOUR AUDIENCE** |

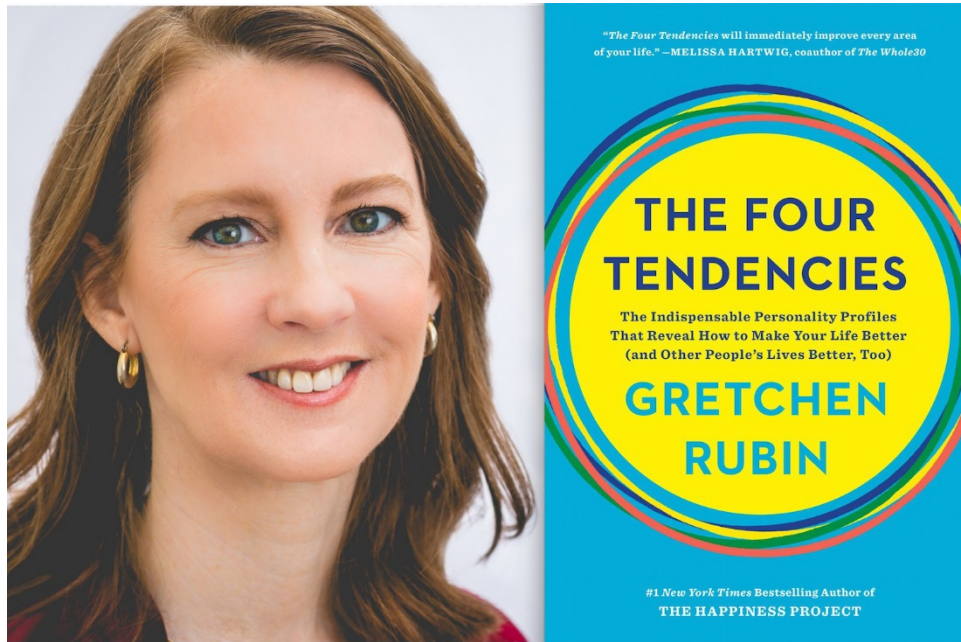


# KNOW YOUR AUDIENCE

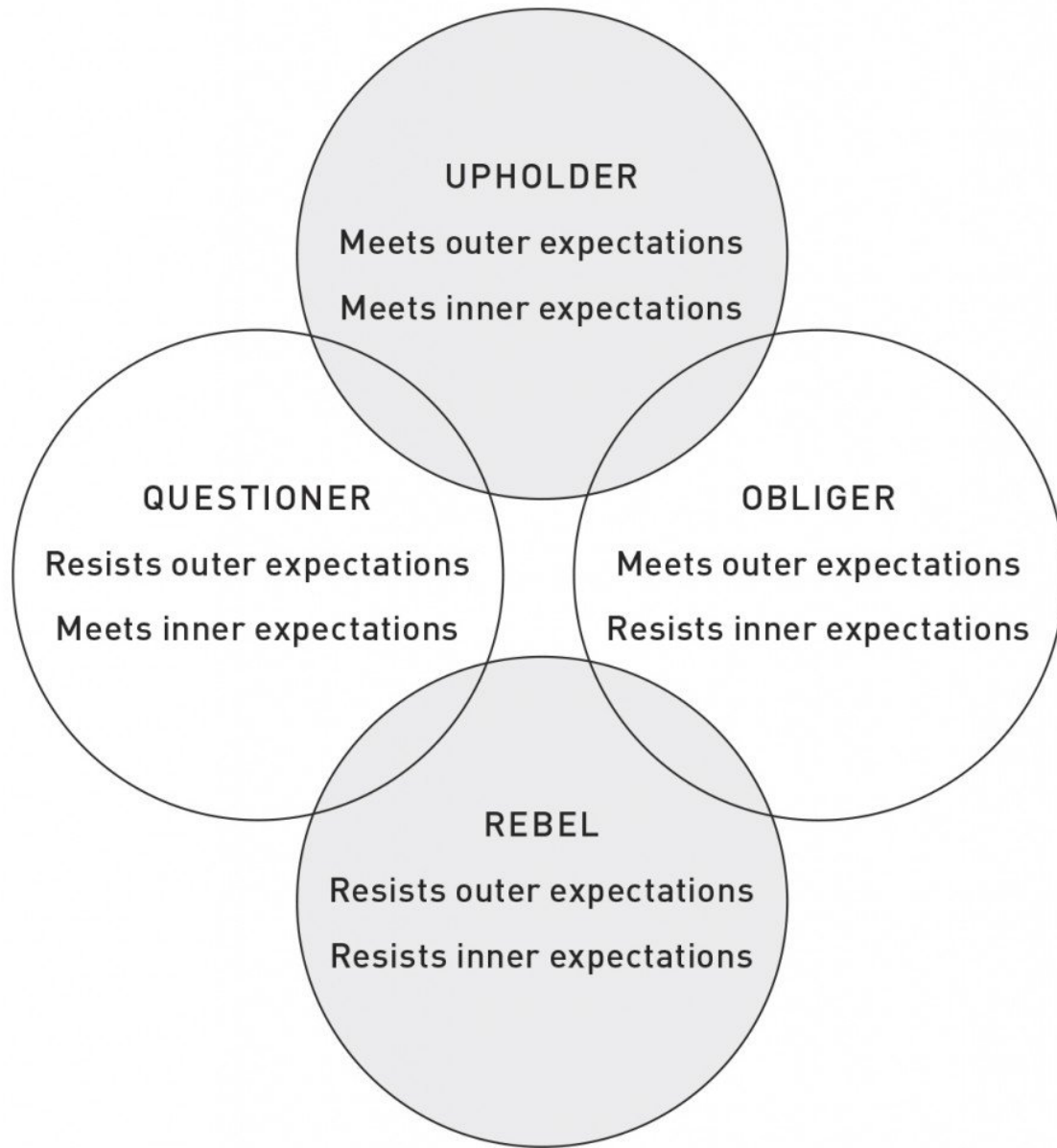
**Qualitative**

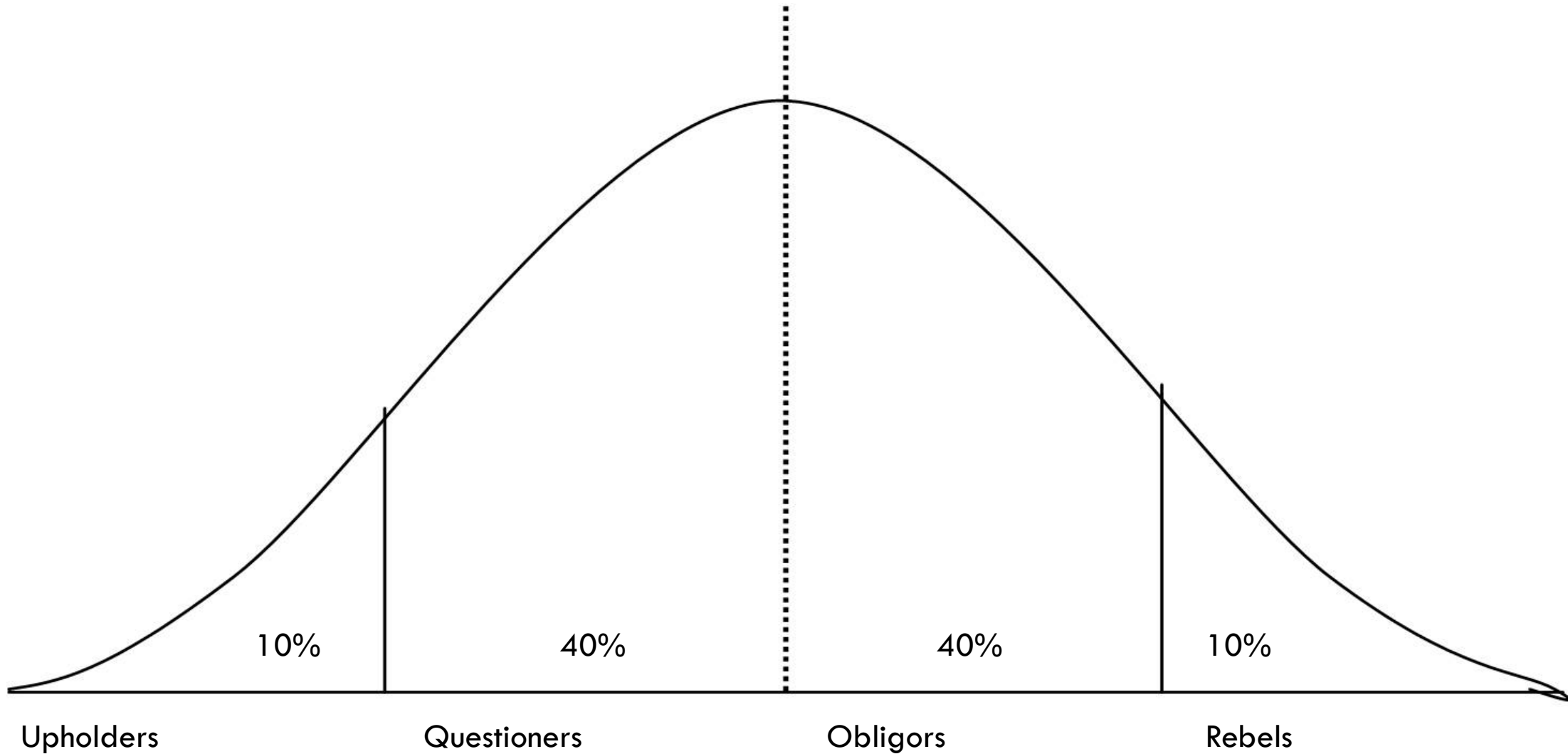
**Quantitative**

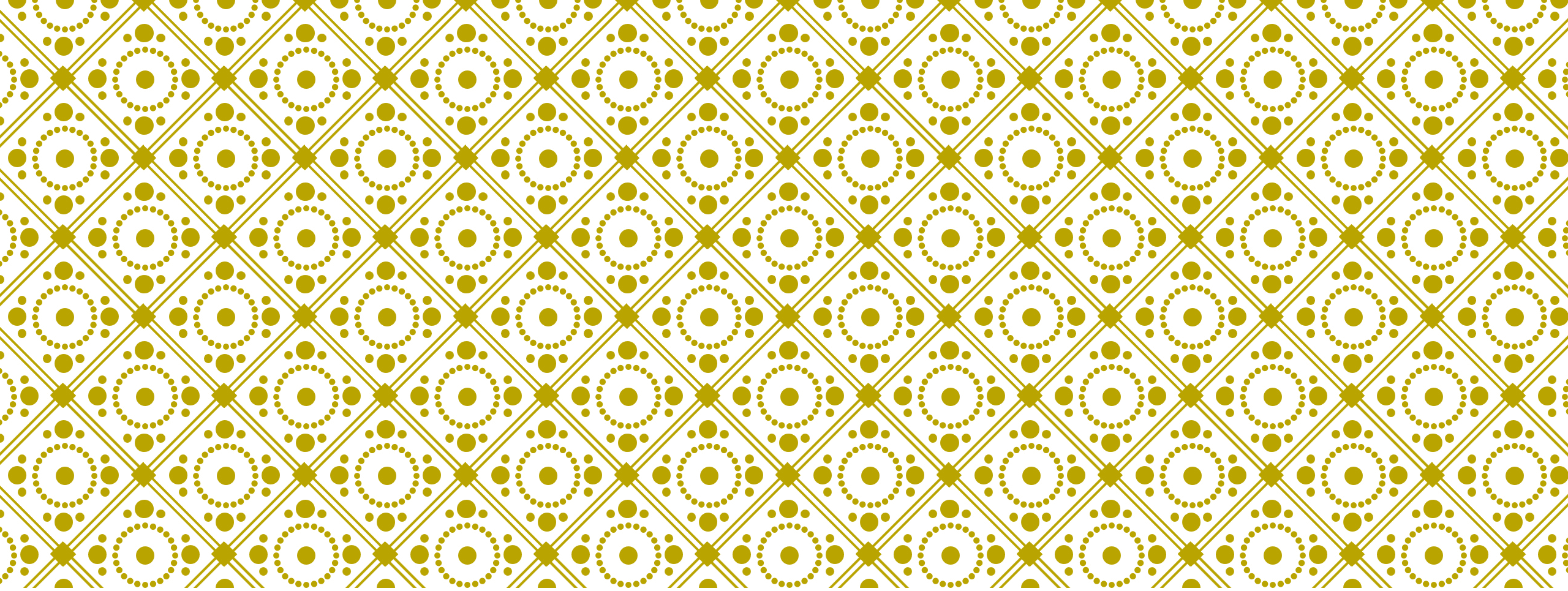
# GRETCHEN RUBIN



- ❖ Upholder
- ❖ Questioner
- ❖ Obligor
- ❖ Rebel



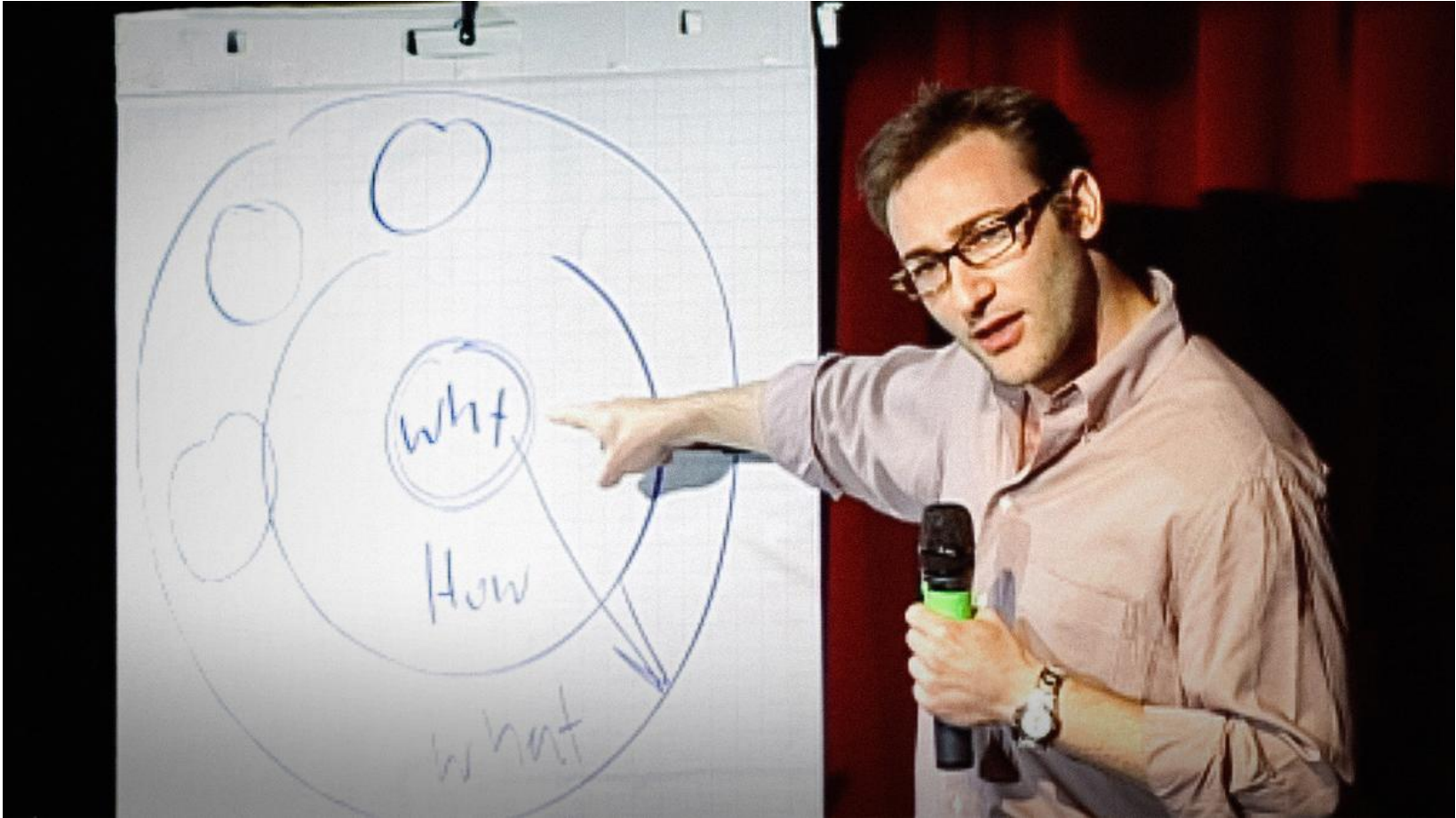




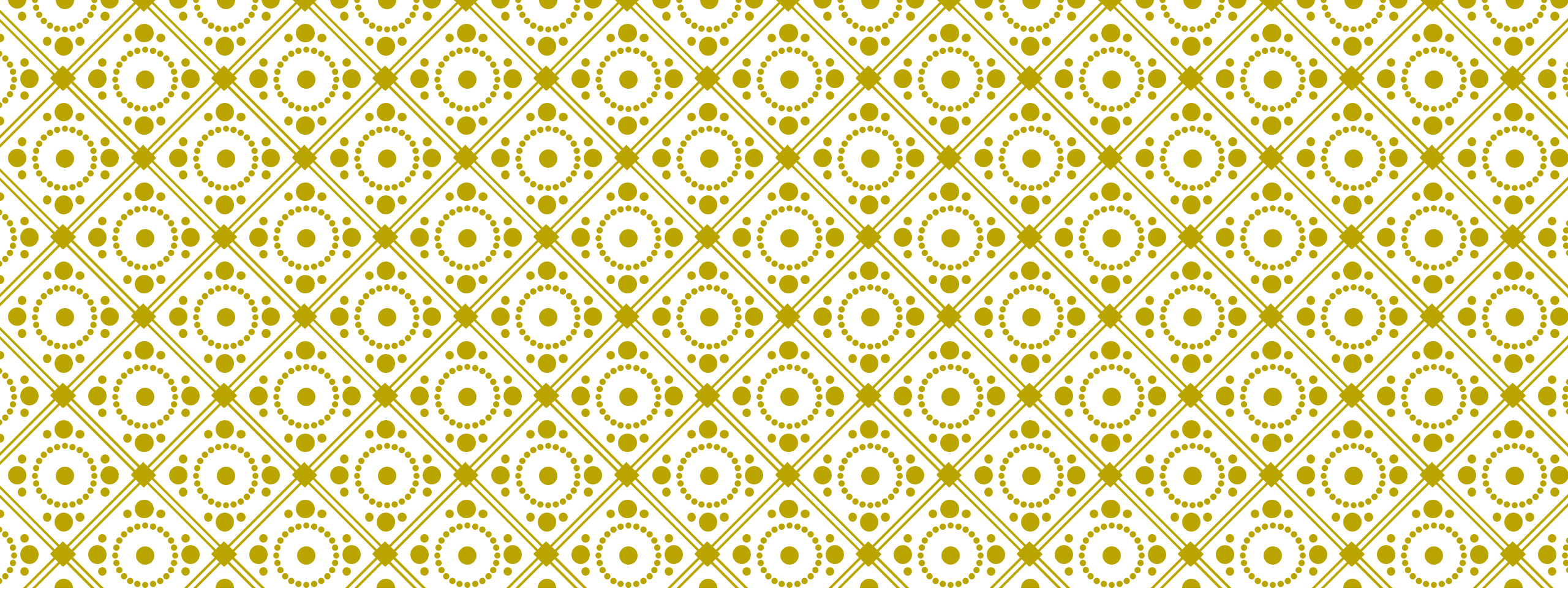
**ASK AND EXPLAIN WHY?**











**STORYTIME** |

# ORAL HISTORY



❖ 3-7 minutes

❖ 137 countries

❖ 1,500-2,000 monthly pageviews

# WEDDING PHOTOS

❖ Robert Waller Photographs

❖ Natural disaster

X

# AUDIOLOGY

❖ Clinical data

❖ Security concerns

X





# FIXITY

Collection	Approx. Size	Approx. Time Taken Before	Approx. Time Taken After
MD5_art_dept	10 GB	40 mins	5 min
MD5_cartoons	71 GB	4 hours	30 min
MD5_manuscripts	953 GB	2.5 days	5 hours



# RESULTS

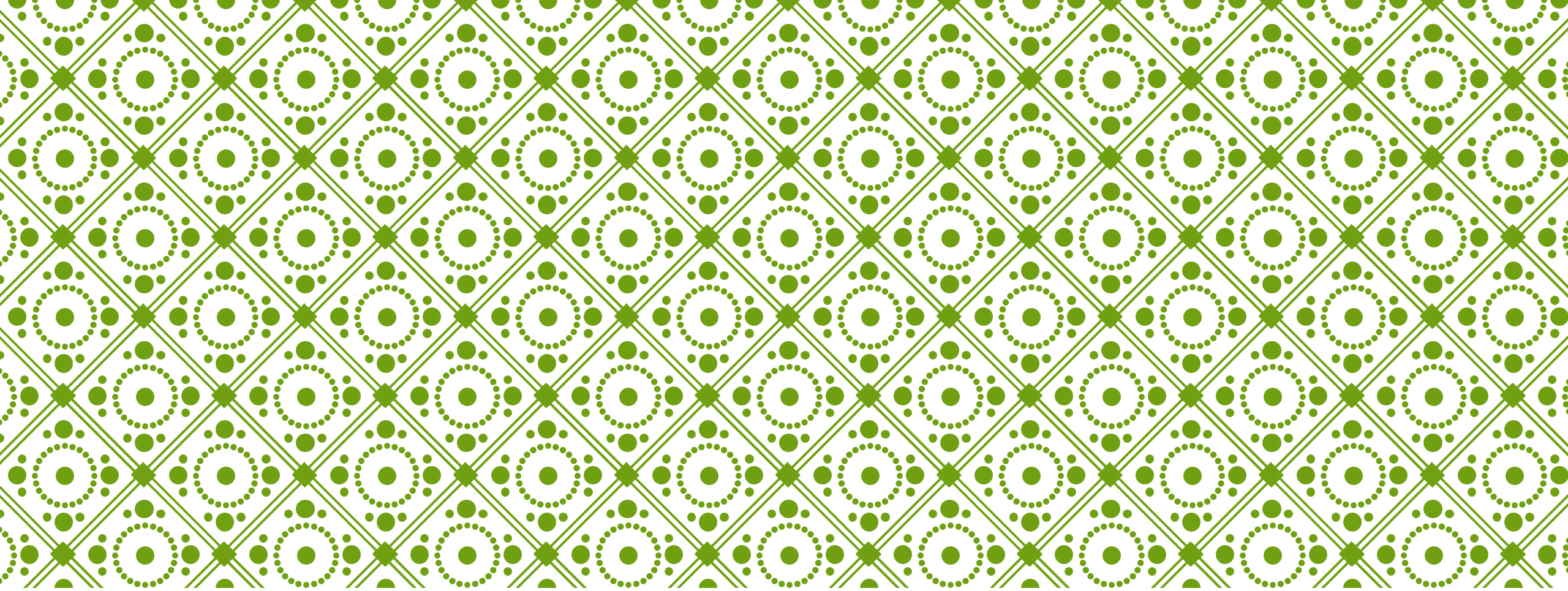
- ❖ Dedicated server to run fixity checks
- ❖ Created a measurable timeline for when this method wouldn't work anymore
- ❖ Created metrics to persuade administration



# Track and Find FUNDING FOR LIBRARIES

A data tool and capacity building training to help libraries and their supporters thrive

EXPLORE DATA TOOL



**THANK YOU!**

