

9-1980

On the Occurrence of *Spenocarcinus corrosus* Milne-Edwards (Brachyura: Majidae) in the Gulf of Mexico

Gary D. Goeke
Barry A. Vittor and Associates

J. Kevin Shaw
Barry A. Vittor and Associates

DOI: 10.18785/negs.0401.10

Follow this and additional works at: <https://aquila.usm.edu/goms>

Recommended Citation

Goeke, G. D. and J. Shaw. 1980. On the Occurrence of *Spenocarcinus corrosus* Milne-Edwards (Brachyura: Majidae) in the Gulf of Mexico. *Northeast Gulf Science* 4 (1). Retrieved from <https://aquila.usm.edu/goms/vol4/iss1/10>

This Article is brought to you for free and open access by The Aquila Digital Community. It has been accepted for inclusion in *Gulf of Mexico Science* by an authorized editor of The Aquila Digital Community. For more information, please contact Joshua.Cromwell@usm.edu.

ON THE OCCURRENCE OF *Sphenocarcinus corrosus* MILNE-EDWARDS (BRACHYURA: MAJIDAE) IN THE GULF OF MEXICO

Many workers have concentrated on the brachyuran decapod fauna of the Gulf of Mexico (Wass, 1955; Chace, 1956; Bullis and Thompson, 1965; Abele, 1970; Rouse, 1970; Soto, 1972; Felder, 1973) with one worker (Powers, 1978) reporting 352 species of brachyuran crabs from this region. Within the family, Majidae, 83 species in 29 genera are reported with *Stilbomastax margaritifera* added by Williams *et al.* (1977).

This is the first record of an additional species, *Sphenocarcinus corrosus* Milne-Edwards, 1875 from the northeastern Gulf. Previously collected from North Carolina south to Barbados, this record

extends the known geographic and bathymetric range of this species (Fig. 1). Established depth ranges taken from previous accounts (Rathbun, 1925; Williams, 1965) range from 165 to 270m. Specimens examined during this study, however, were collected from as shallow as 85m, a considerable depth extension, with the deepest examined from only 98m.

Material examined for this study consisted of 14 individuals collected in the northeastern Gulf of Mexico and comparative specimens from North Carolina: 1 male, 9.2 cl, T. S. Hopkins, 18 October 1975, (BLM 22-100-VI-B-a) 29° 32' 45" N, 87° 23' 30" W; 6 male, 3 females, 7.6-24.5 cl. T. S. Hopkins, 9 February 1976, (BLM 30-VI-B-C-1) 29° 32' 45" N, 87° 24' 15" W; 1 female, 19.9 cl, T. S. Hopkins, 27 June 1976, (BLM 40-VI-B-C-1) 29° 35' N, 87° 20' W, 98m; 1 male, T. S. Hopkins, 8

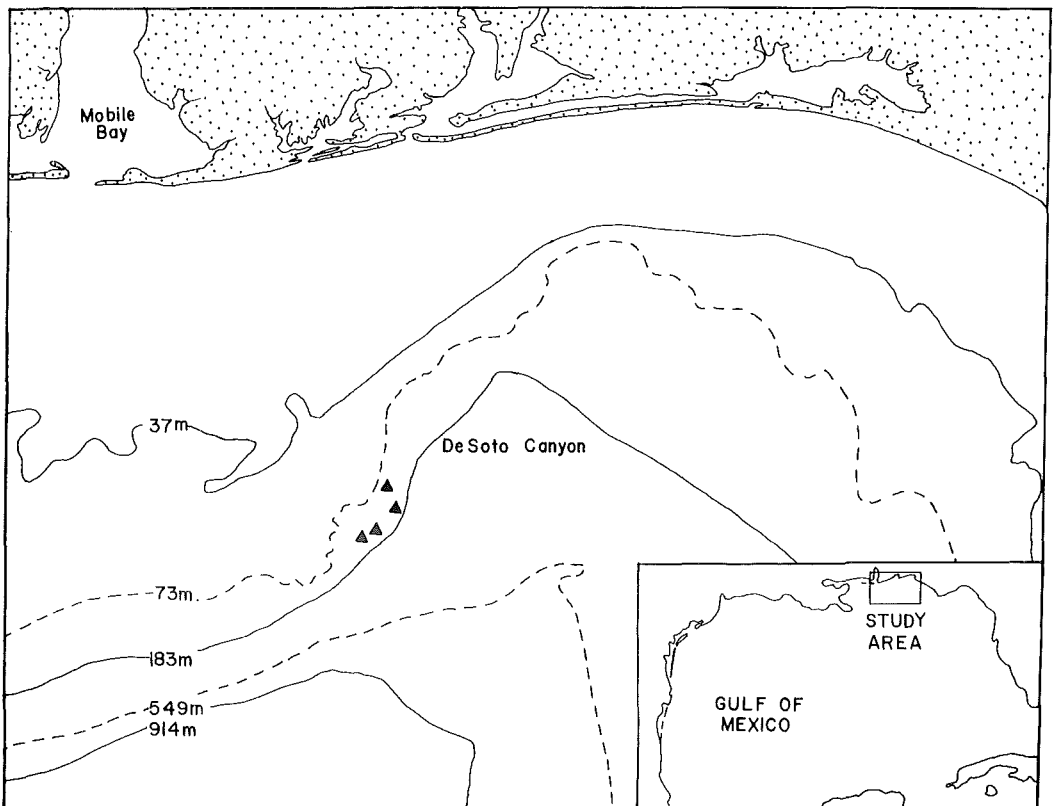


Figure 1. Station locations of material examined from Gulf of Mexico.

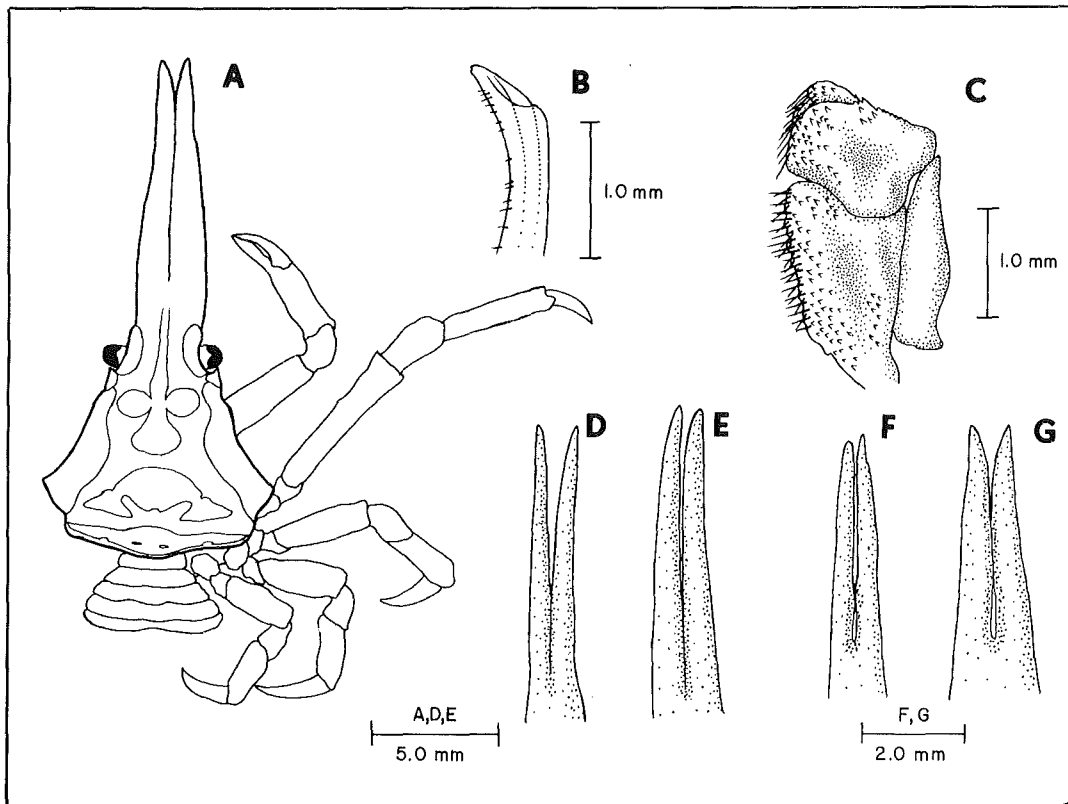


Figure 2. *Sphenocarcinus corrosus* Milne-Edwards. A) ovigerous female from Gulf of Mexico; B) tip of male pleopod one; C) third maxilliped; rostral series of material from Gulf of Mexico (E,F) and North Carolina (D,G).

February 1978, 29° 34' 59" N, 87° 20' 07" W, 95m, 2 females, 14.8 (one broken), J. T. Williams, 27 May 1979, 29° 37' 30" N, 87° 21' W, 85m; 1 female (ovig), USNM 15183, 22.4, ALBATROSS, 2 April 1885, Cape Fear, North Carolina, 33° 20' N, 77° 05' W, 165m; 1 male, USNM 51071, 12.5, FISH HAWK, 28 July 1915, 30 miles South Cape Lookout Lightship, North Carolina, about 183m.

Rathbun (1925: 187) pointed out the extent of individual variation of the development of the rostrum within this species. A comparison of previously published illustrations has also brought attention to variation in the degree of sculpturing on the dorsal surface of the carapace. The figure which accompanied the original description of *Sphenocarcinus corrosus* A. Milne-Edwards, 1875, illustrates the

elevations of the carapace. On the type specimen from Barbados, the elevations of the protogastric, gastric and lateral regions are disconnected. Rathbun (1925: pl. 62) figures a female from North Carolina with the gastric and protogastric lobes connected. The cardiac, gastric and lateral lobes of the specimen are also more developed than the Barbados material. The illustration of Williams (1965: 248) shows the gastric, protogastric and lateral lobes connected and fused anteriorly. The lateral lobes of material figured in Williams (1965, 248) are not as well developed as the illustrations of previous authors. Specimens from the Gulf of Mexico most closely fit the specimen illustrated by Rathbun (1925). There is a high degree of variation in the development of the lobes of the carapace in

material examined in this study and a fair amount of variation also evident in the rostral spines. The rostrum of some specimens is fused throughout its length while in others the spines are divergent and not fused in the distal half of the rostrum (Fig. 2).

Williams (1965: text fig. 233C) has illustrated the first male pleopod of *Sphenocarcinus corrosus* from the Carolinas and Garth (1958, 533) illustrated the gonopod of its Pacific analogue, *S. agassizi* Rathbun, 1893. Specimens from the Gulf generally agree with the previously published figure of the gonopod with the exception of slight differences in the apex development. Gulf specimens appear slightly more developed in the apical lobe. A minor difference in the third maxilliped compared with Rathbun (1925, fig. 73) could be attributed to the angle at which these parts were observed. A comparison with the type specimens was not thought necessary.

Published records of this species (A. Milne-Edwards, 1875; Hay and Shore, 1918; Rathbun, 1925; Williams, 1965) have defined the previous geographic limits from Cape Lookout, North Carolina, to the Barbados but have contained little information of substrate types. Rathbun (1925) reports the species from gray sand off North Carolina and coral and broken shell off Barbados. Garth (1958) reports *S. agassizi* from a wide variety of substrates ranging from coral to rock with sand and mud with shell. Analysis of substrate information for our collections shows *S. corrosus* collected from bottoms of very coarse sand shell rubble.

ACKNOWLEDGMENTS

The authors wish to acknowledge Dr. T. S. Hopkins (Dauphin Island Sea Lab) for allowing use of material collected for a subcontract from the Bureau of Land

Management, and Mr. Jeff Williams (University of Florida) for providing material and collection data. Dr. Richard Heard (Gulf Coast Research Lab) kindly verified our identification of the specimens. Dr. Austin Williams (NOAA Systematics Laboratory, National Museum of Natural History) also provided material for this study.

LITERATURE CITED

- Abele, L. G. 1970. The marine decapod Crustacea of the northwestern Gulf of Mexico. Masters Thesis, Florida State University, Tallahassee, 137 pp.
- Bullis, H. R. and J. R. Thompson. 1965. Collections by the exploratory fishing vessels OREGON, SILVER BAY, COMBAT, and PELICAN made during 1956-1960 in the southwestern North Atlantic. Spec. Scient. Rep. U. S. Fish Wildl. Serv. Fisheries. 510: 1-130.
- Chace, F. A., Jr. 1956. *In*: S. Springer and H.R. Bullis, Collections by the OREGON in the Gulf of Mexico. Spec. scient. Rep. U. S. Fish Wildl. Serv. Fisheries. 196: 1-134.
- Felder, D. L. 1973. An Annotated Key to Crabs and Lobsters (Decapoda, Reptantia) from Coastal Waters of the Northwestern Gulf of Mexico. Pub. No. LSU-SG-73-02 of the Center for Wetland Resources, Louisiana State University, Baton Rouge. 103 pp.
- Garth, J. S. 1958. Brachyura of the Pacific Coast of America, Oxyrhyncha. Allan Hancock Pac. Exped. 21: 10499.
- Hay, W. P. and C. A. Shore. 1918. The decapod crustaceans of Beaufort, N. C., and the surrounding region. Bull. U.S. Bur. Fish. 35: 369-475.
- Milne-Edwards, A. 1875. Etudes sur les Xiphosures et les Crustaces de la region Mexicaine. *In*: Mission scientifique au Mexique et dans l'Amerique centrale, pt. 5; Rech. Zool. Hist. Faune Am. Centr.

- Mex., No. 3, pp. 57-120, pls. 15-20.
- Powers, L. W. 1978. A Catalogue and Bibliography to the Crabs (Brachyura) of the Gulf of Mexico. Contributions in Marine Science, supplement to vol. 20.
- Rathbun, M. J. 1925. The spider crabs of America. Bull. U. S. natn. mus. 129: 1-613.
- Rouse, W. L. 1970. Littoral Crustacea from southwest Florida. Q. J. Fla. Acad. Sci. 32: 127-152.
- Soto, L. A. 1972. Decapod shelf-fauna of the northeastern Gulf of Mexico, Distribution and zoogeography. M. S. Thesis. Florida State University, Tallahassee, Florida. 128 pp., 47 text-figs.
- Wass, M. L. 1955. The decapod crustaceans of Alligator Harbor and adjacent inshore areas of northwestern Florida. Q. J. Fla. Acad. Sci. 18: 129-176.
- Williams, A. B. 1965. Marine decapod crustaceans of the Carolinas. Fish Bull. 65: 1-298.
- _____, J. K. Shaw and T. S. Hopkins. 1977. *Stilbomastax*, a new genus of spider crab (Majidae Tychinae) from the West Indies Region, with notes on American relative. Proc. Biol. Soc. Wash. 90(4): 884-893.
- Gary D. Goeke and J. Kevin Shaw, Barry A. Vittor & Associates, 8100 Cottage Hill Road, Mobile, AL 36609.

SOME FACTORS INFLUENCING THE DISTRIBUTION OF THE SNAIL *Neritina reclivata*

The gastropod Family Neritidae contains over 200 living species, most of which inhabit intertidal zones in tropical and temperate climates. The olive nerite, *Neritina reclivata* Say, is irregularly distributed along coastal regions of the Gulf of Mexico and the Caribbean Sea from 10 to 30 degrees N latitude. Its distribution ends in the north at Jacksonville, Florida on the Atlantic Ocean and in the south at Trinidad (Russell, 1941). Most records of *N. reclivata* are from coastal regions of the Gulf of Mexico, but this may be due to the paucity of faunal surveys elsewhere in its range.

Despite the common occurrence of *N. reclivata*, it remains virtually unstudied. Russell (1941) reported that *N. reclivata* inhabits brackish and freshwater, and is absent from many small islands in the Antilles that do not support permanent freshwater rivers. According to this author, *N. reclivata* is found on solid substrates in the water, but not on mud. *N. reclivata* crawls using monotaxic retrograde waves, a type of locomotion often found in species living on solid substrate (Gainey, 1976). Pilsbry (1931) noted the snail's presence on reeds and other aquatic plants near drainage canals and suggested that algae may comprise the food of the snail.

We have collected *N. reclivata* from hard substrates (e.g., plants, stumps, rocks) at locations between 5 km up the Escambia River and the western tip of the Gulf Breeze peninsula, Santa Rosa County, Florida. These locations correspond to a salinity range of 1 to 19 ppt (U.S. Environmental Protection Agency, 1975). Because our preliminary observations suggested an affinity of *Neritina* for solid substrates, we investigated this