

The University of Southern Mississippi
The Aquila Digital Community

Master's Theses

Fall 12-1-2015

The Vascular Flora of Wayne County, Mississippi

Daniel M. McNair
University of Southern Mississippi

Follow this and additional works at: https://aquila.usm.edu/masters_theses



Part of the [Biology Commons](#), [Botany Commons](#), and the [Environmental Sciences Commons](#)

Recommended Citation

McNair, Daniel M., "The Vascular Flora of Wayne County, Mississippi" (2015). *Master's Theses*. 149.
https://aquila.usm.edu/masters_theses/149

This Masters Thesis is brought to you for free and open access by The Aquila Digital Community. It has been accepted for inclusion in Master's Theses by an authorized administrator of The Aquila Digital Community. For more information, please contact aquilastaff@usm.edu.

THE VASCULAR FLORA OF WAYNE COUNTY, MISSISSIPPI

by

Daniel McKinney McNair

A Thesis

Submitted to the Graduate School
and the Department of Biological Sciences
at The University of Southern Mississippi
in Partial Fulfillment of the Requirements
for the Degree of Master of Science

Approved:

Dr. Mac Alford, Committee Chair
Associate Professor, Biological Sciences

Dr. Micheal Davis, Committee Member
Associate Professor, Biological Sciences

Dr. Franklin Heitmuller, Committee Member
Associate Professor, Geography and Geology

Dr. Karen S. Coats
Dean of the Graduate School

December 2015

ABSTRACT

THE VASCULAR FLORA OF WAYNE COUNTY, MISSISSIPPI

by Daniel McKinney McNair

December 2015

The vascular flora of Wayne County, Mississippi, was surveyed from 2013–2015, and the species of native and naturalized plants are listed. In total, 1,135 species were identified from field collections, previously collected herbarium specimens, and field observations. These belong to 556 genera and 165 families. Four of these species represent first recorded occurrences in the state of Mississippi: *Blyxa aubertii* Rich., *Gomphrena serrata* Pav. ex Moq., *Isoetes valida* (Engelm.) Clute, and *Polypogon interruptus* Kunth. GPS coordinates are given for important collection sites representing the diversity of plant communities in the county. All voucher specimens from the survey are deposited in the herbarium of The University of Southern Mississippi (USMS).

DEDICATION

In memory of my aunt, Marian Griffith (1955–2015), an exceptional gardener and lover of plants. It was fitting for such a beautiful person to be buried in one of the most beautiful places on Earth: Wayne County, Mississippi.

ACKNOWLEDGMENTS

I would especially like to thank my committee chair, Mac Alford, for mentoring me throughout my time in graduate school and for innumerable hours helping with this and other projects. Three years was not enough time to spend working for one of the best botanists in the southeastern U.S.A. I would like to thank the other members of my committee, Micheal Davis (USM) and Frank Heitmuller (USM), for their help and feedback on the project. My wife, Ann Shivers-McNair, encouraged and supported me through the entire process. She also accompanied me on many collecting trips and helped me think critically about my research. Heather Sullivan (Mississippi Museum of Natural History) was kind enough to take me to several rare plant sites, help with identification, and provide historical collection data. Steve Leonard and Jay McClain (U.S. Forest Service) also shared invaluable locality data with me. I would like to thank the members of the “Mississippi *Isoetes* Expedition” for their help in 2013: Mac Alford, Carl Taylor (Smithsonian Institution), Lytton Musselman (Old Dominion University), Peter Schafran (Old Dominion University), and Steve Leonard. The following were kind enough to permit me to collect on their land: the U.S. Forest Service, Steve Farrier, Scott Griffith, and members of the Wayne County Forestry Association. I am grateful to the following for help with plant identifications or other technical expertise: Charles Allen, Ronald Lance (North American Land Trust), Bruce Sorrie (UNC Herbarium), Alan Weakley (UNC Herbarium), Jennifer Lamb (USM), Marks McWhorter (USM), Kenneth Rhinehart (USM), Brandy Purdy (USM), Stephanie Steele (U.S. Forest Service), Gil Nelson (iDigBio), Theresa Miller (SPECIFY Software), the team at SERNEC, Bill Clark (Earthpoint), and Lisa Wallace (Mississippi State University). I would like to thank my

lab mates Tharangamala Samarakoon, C. Liliana Hernández, and Nichole Long-Aragon for helping in a variety of ways. Andrew Fennell and Tori Gans Collins both conducted molecular phylogenetic analysis using some of my collections as part of their undergraduate honors theses, and they were kind to share their data and findings with me. I am very grateful to my family and friends who hosted me at various times when I needed a place to stay while doing research: Steve and Mildred McNair, Beth and Jerry Shivers, Jennifer Lamb and Brandon Morris, and Hugh Donohoe. I would like to thank the Department of Biological Sciences at USM, especially for funding several conference trips. I would like to thank the Graduate School for various awards and for taking an interest in plant research in the Alford Lab. Finally, I would like to thank the National Science Foundation for a grant to USM for the Magnolia grandifLORA project that funded my position as a Graduate Research Assistant during my time at USM (DBI 1203684).

TABLE OF CONTENTS

ABSTRACT	ii
DEDICATION	iii
ACKNOWLEDGMENTS	iv
LIST OF TABLES	vii
LIST OF ILLUSTRATIONS	viii
CHAPTER	
I. INTRODUCTION	1
II. STUDY SITE	3
III. METHODS	4
IV. RESULTS AND DISCUSSION	6
Collection Sites and Diversity of Communities	
Floristic data	
List of Taxa	
REFERENCES	51

LIST OF TABLES

Table

1. Plant Communities and Collection Localities.....6
2. Largest Families and Genera11

LIST OF ILLUSTRATIONS

Figure

1. Location of Wayne County, Mississippi, U.S.A.....3
2. Vascular plant collection sites in Wayne County, MS, from 1896–2015.....8
3. Limestone and Jackson Prairie associated communities in Wayne County, MS9
4. Coastal Plain communities in Wayne County, MS.....10

CHAPTER I

INTRODUCTION

Much of the Coastal Plain of the eastern United States was once covered by longleaf pine savanna, a plant and animal community characterized by high species diversity and endemism (Sorrie and Weakley 2001; Noss et al. 2014). However, it is estimated that less than 3% of intact longleaf communities remain due to urban and agricultural development (Jose et al. 2006). The southern part of the state of Mississippi contains large areas of National Forest land with relatively abundant longleaf pine savannas still intact or recently restored. The state also contains grasslands of a much different character that may be even more threatened than the longleaf pine system: the prairies, specifically, the Black Belt and the Jackson Prairie (Noss 2012). The Black Belt stretches across Alabama, Mississippi, and Tennessee, and at one time may have resembled prairies in the Great Plains (many of the plant communities are similar), but because of agricultural development, less than 1% of the Black Belt remains intact (Noss 2012). The same may be true for the much smaller Jackson Prairie which stretches across the middle of the state of Mississippi and partially into Alabama (Noss 2012).

In Wayne County, Mississippi, the Jackson Prairie and the longleaf pine system meet (Chapman et al. 2004). In the southern part of Wayne County, there is an area of the DeSoto National Forest where several longleaf savannas remain intact; the Jackson Prairie, on the other hand, is now seen only in remnants, preserved in graveyards, hay fields, or roadsides (pers. obs.). Therefore, Wayne County offers a unique opportunity to observe a convergence of two very different plant communities which are already intrinsically diverse.

The limestone substrate responsible for the Jackson Prairie (Chapman et al. 2004; Thompson 2011) hosts a range of plant communities from dry open-canopy cedar glades to mesic closed-canopy deciduous forests. The longleaf pine system is also highly variable and ranges from saturated pitcher plant bogs to xeric sandhills. Although the substrates of these plant communities are different, they share a temperate coastal climate that likely protected them from Pleistocene glacial extinction and explains in part the great number of endemic species in the Coastal Plain (Sorrie and Weakley 2001). One such species, a *Euphorbia*, was discovered during the present study in limestone outcrops and may be mostly restricted to the Jackson Prairie (Alford et al. in prep.). The species is remarkable in that it shows all the hallmarks of evolutionary distance from its closest relatives—it is genetically and morphologically unique. Its behavior is also unique in terms of phenology and habitat preference. It may be similar or the same species as *Euphorbia apocynifolia* Small, which has long been unrecognized and instead synonymized with *Euphorbia pubentissima* Michx. (Alford et al. in prep.).

Preserving what remains of these unique systems requires an understanding of the habitats and distributions of both native and non-native species that may be competing for space. However, prior to this study, no full surveys of Wayne County have been conducted. In fact, of the 82 counties in Mississippi, only 9 have been fully surveyed (for the full list see: Majure et al. 2011 and Philley 2013), and only 1 of these was in the southern part of the state (Alford 2001). Thus, the present study seeks to provide 1) a checklist of species identified from the county from past collections, recent collections, and field identifications, 2) descriptions of plant communities, and 3) spatial coordinates and collection dates for vouchers via the SERNEC database (<http://sernecportal.org>).

CHAPTER II

STUDY SITE

Wayne County (Figure 1) is mostly rural with the majority of land devoted to agriculture, especially tree farming. The county encompasses 2,099.8 square km with a population estimated in 2010 of 20,747 people (U.S. Census Bureau, 2010). The topography is generally rugged with elevations ranging from a high of 146 m above sea level near Eucutta to a low of approximately 30 m in the Chickasawhay River in the southern part of the county (USDA, NRCS 2009). The largest body of water in the county is the Chickasawhay River that runs north to south through the entire county. There is also a large tributary to the Chickasawhay (the Buckatunna), several smaller streams, and oxbow lakes, as well as a large artificial lake southwest of Waynesboro, Maynor Creek Water Park. Soil types are highly variable, from sandy soils to hard clays, to limestone-dominated soils (for a full soil survey see USDA, NRCS 2009). Weather data collected from a station in Waynesboro from 1981–2010 indicates a mean annual temperature of 18.2°C and a mean annual precipitation of 148.8 cm (Arguez et al. 2010).

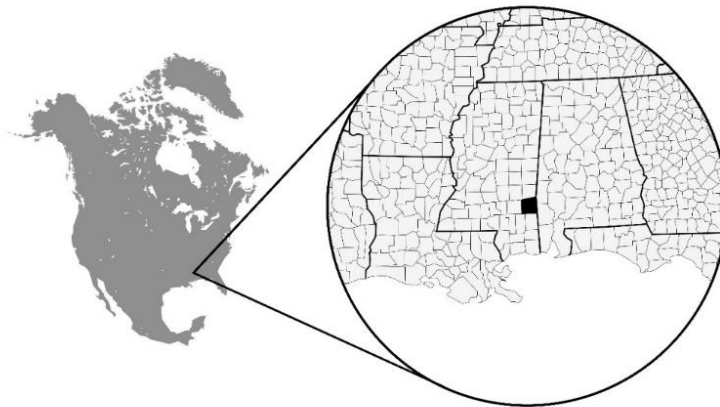


Figure 1. Location of Wayne County, Mississippi, U.S.A.

CHAPTER III

METHODS

Collections considered in this study include both historical and recent records from 1896–2015, from nearly all parts of the county (Figure 2). The first major collections in the county were carried out by Samuel B. Jones, Jr., from 1966–1970. Steven W. Leonard collected in the county from 1996–2006, focusing on rare plants. More recently, from 2011–2012, Brittany Nicholson Singley and Mac H. Alford made approximately 300 collections at the Gopher Farm Sandhill in Wayne County (deposited at USMS). I made approximately 80 collections trips to the county between January 2013 and August 2015 and collected approximately 2,000 voucher specimens during this time. Most of these collections were made using the relevé method, which broadly defined, involves establishing defined collection areas and attempting to collect or identify all the species in those areas. Collections were also gathered when interesting plants were spotted on the roadside while driving between sites. Vouchers were deposited at USMS. All voucher data were entered into the SERNEC database and are available at sernecportal.org. In a few cases, vouchers were not collected and are recorded here as field identifications.

Survey sites that were deemed representative of different plant communities were sought through a variety of means (see Figure 2 and Table 1). Initial sites were selected by contacting those who had already collected floristic data in the county. Other botanically rich or unique sites were discovered by exploration of the county.

For identification and taxonomic circumscriptions, I primarily followed Alan Weakley's *Flora of the Southern and Mid-Atlantic States* (working draft of 2015). I also

consulted the collections of the herbarium of the University of Southern Mississippi (USMS) as well as the imaged collections of other herbaria in the southeastern U.S.A.

CHAPTER IV

RESULTS AND DISCUSSION

Collection Sites and Diversity of Communities

A list of major collection sites visited from 2013–2015 is supplied. This list includes brief descriptions of the dominant plant communities observed in those locations (Table 1). Additionally, a map of all georeferenced specimens in the SERNEC database (2015) is provided (Figure 2). Photographs taken in Wayne County from 2013–2015 are also supplied as an attempt to visualize—but not exhaustively catalog—the diversity of plant communities in the county (Figures 3–4).

Table 1

Plant Communities and Collection Localities

Plant communities	Localities
Sandhills and dry savannas	DeSoto: Gopher Farm: 31.458347, -88.769209* / DeSoto: power lines off Highway 63: 31.446859, -88.742355* / Off Highway 84 between Waynesboro and Whistler: 31.69682, -88.729835
Wet savannas and pitcher plant bogs	DeSoto: “Jay’s Bogs”: 31.50971, -88.941092 and 31.524519, -88.931027* / DeSoto: power line north of Highway 63: 31.451574, -88.738165
Beech-Magnolia forests	DeSoto: 31.452508, -88.663594* / DeSoto: 31.460626, -88.652201*
Xeric prairie remnants	Hay fields off Matherville Frost Bridge Road: 31.80537, -88.508391* / Cedar barrens: 31.799956, -88.501246*
Oak-hickory forests	North of Waynesboro: 31.701149, -88.66456* / Railroad north Highway 45, near Shubuta: 31.836609, -88.696232 / Cemetery: 31.839348, -88.681533

Table 1 (continued).

Plant communities	Localities
Mesic forests with limestone soils	Buckatunna Ridge: 31.740958, -88.526963* / Coldwater Creek: 31.747821, -88.54642* / Stream flowing into Chickasawhay River: 31.709165, -88.659368* / Shiloh Creek: 31.829409, -88.529511
Riverine habitats	Buckatunna Creek, near Buckatunna Ridge: 31.74231, -88.527768* / Chickasawhay River, north of Waynesboro: 31.682802, -88.678513* / Little Thompson Creek: 31.696423, -88.849086* / Chickasawhay floodplain: 31.839467, -88.694526
Oxbow and artificial lakes	Oxbow near Buckatunna Ridge: 31.74273, -88.530847* / Maynor Creek Water Park: 31.657764, -88.716273 / Oxbow off Highway 63: 31.641946, -88.652222 / Oxbow off Old 45 Winchester Road: 31.601291, -88.580768
Anthropologically disturbed habitats	Waynesboro cemetery: 31.68492, -88.640957* / Waynesboro railroad tracks: 31.675167, -88.646858* / Drainages off Spring Street, Waynesboro: 31.67214, -88.641193*

An asterisk at the end of a coordinate denotes a site was visited at least once every two weeks during spring, summer, and fall. DeSoto = DeSoto National Forest, Chickasawhay District. Coordinates are in GPS decimal format (datum: WGS84) and should be interpreted with an error radius of 50 m.

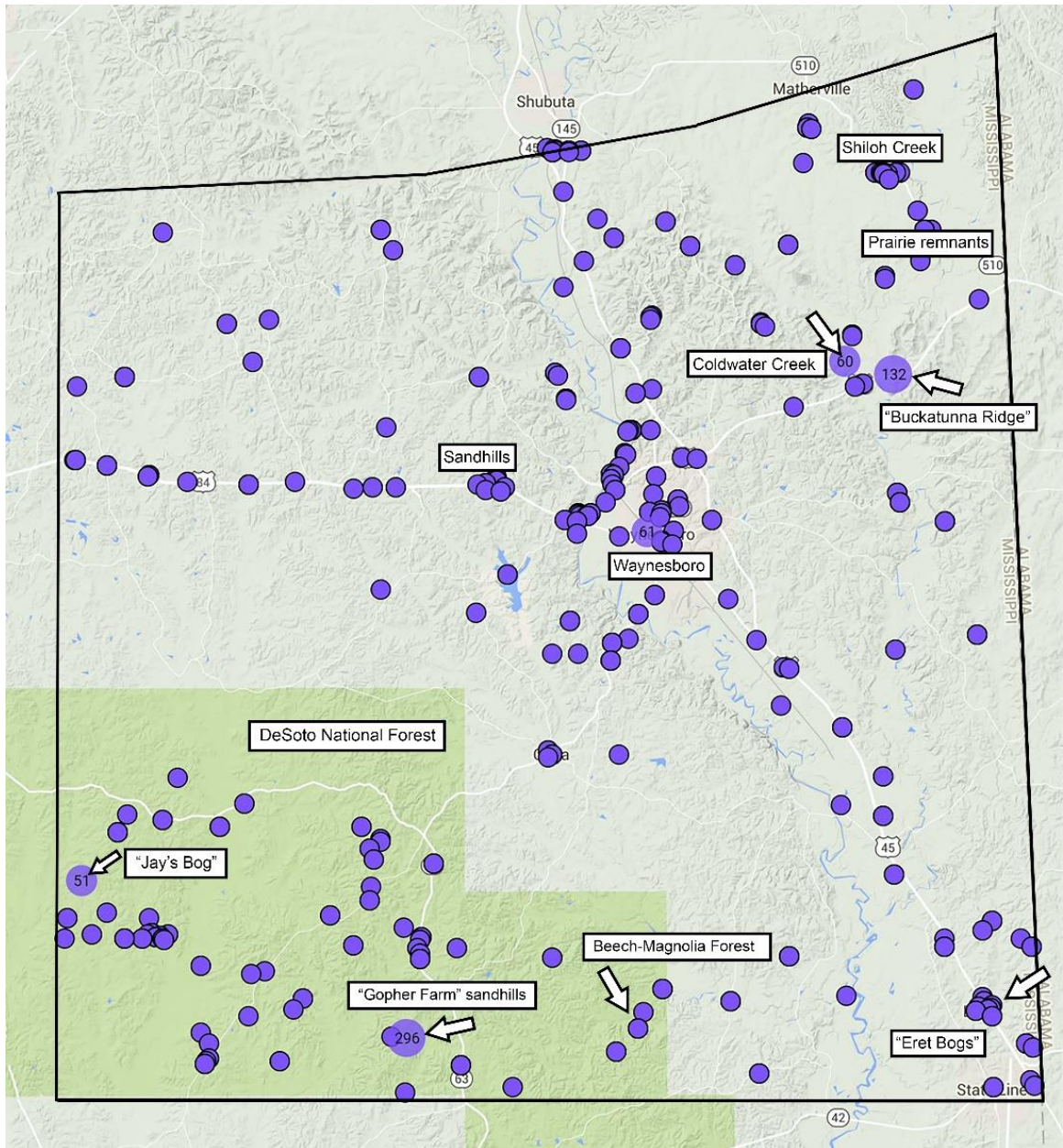


Figure 2. Vascular plant collection sites in Wayne County, MS, from 1896–2015. Map generated from SERNEC (2015) with commonly used locality names added manually. Larger circles indicate relatively greater numbers of collections from any given locality. The green area in the southwestern part of the county represents National Forest land.

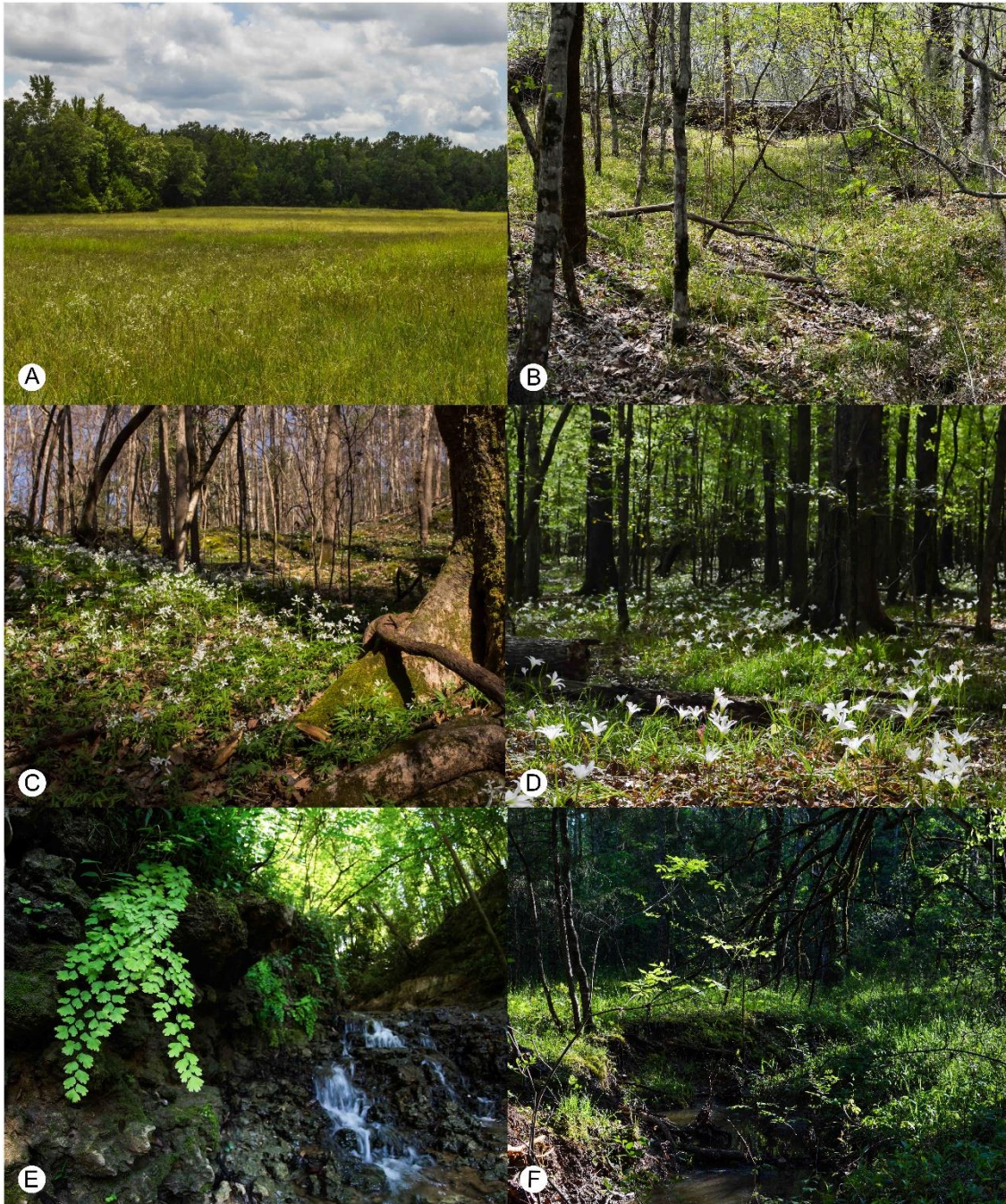


Figure 3. Limestone and Jackson Prairie associated communities in Wayne County, MS. *A.* Hay field with several prairie associated species of Asteraceae. *B.* Oak-hickory forest with relatively open canopy. *C.* Mesic hardwood closed-canopy forest with abundant limestone. *D.* Bottomland prairie with *Zephyranthes atamasca* (L.) Herb. *E.* Small creek cutting through limestone with maidenhair fern growing on its rocky banks. *F.* Primary stream in bottomland prairie with open canopy.



Figure 4. Coastal plain communities in Wayne County, MS. A. Sandhill with *Opuntia* and other xerophytes. B. Dry savannah with longleaf pine and grasses. C. Wet savannah with pitcher plants and orchids. D. Swamp tupelo pond with *Utricularia inflata* in bloom. E. Bottomland dominated by *Taxodium*. F. Blackwater, swift moving creek.

Floristic Data

The collections, both from the current survey and historical records, were identified as 1,135 species. These species belong to 556 genera and 165 families. The Asteraceae were the largest family, represented by 145 species, while the largest genus was *Carex* (Cyperaceae) with 23 species (Table 2). Non-native species make up 12.3% of the flora (following the non-native status given in Weakley 2015). Only native and naturalized species were included in the survey, not cultivated or merely long-persisting species.

Table 2

Largest Families and Genera

Families	# of species	Genera	# of species
Asteraceae	145	<i>Carex</i> (Cyperaceae)	23
Poaceae	134	<i>Quercus</i> (Fagaceae)	18
Fabaceae	79	<i>Dichanthelium</i> (Poaceae)	13
Cyperaceae	64	<i>Rhynchospora</i> (Cyperaceae)	13
Lamiaceae	26	<i>Hypericum</i> (Hypericaceae)	13

Four of the species identified were previously unknown to occur naturally in the state of Mississippi: *Blyxa aubertii* Rich (see discussion in McNair and Alford 2014), *Isoetes valida* (Engelm.) Clute, *Gomphrena serrata* Pav. ex Moq., and *Polypogon interruptus* Kunth. Less than 15 *Gomphrena* individuals were observed growing in the town of Waynesboro along a roadside. However, several thousand *Polypogon* individuals were observed in two consecutive years under a bridge on Highway 84 (31.682786, -88.678722). During both years, these plants were fertile and the second year seemed

more abundant than the first. Given their vigor, this non-native species may spread to other parts of the county and perhaps the state. The *Polypogon* were identified by Poaceae expert Charles Allen. The *Polypogon* also may show some affinity to *Polypogon maritimus* Willd. The *Isoetes* was discovered during the “Mississippi *Isoetes* Expedition” of 2013 (see Acknowledgments) and identified along with two other *Isoetes* species in the county, one of which, *Isoetes louisianensis* Thieret, is listed as federally endangered. These discoveries highlight the importance of conducting surveys to understand the ever changing ranges of plant species. The findings also highlight the importance of gathering baseline floristic data for native plants that may have gone unnoticed, as is probably the case with the genus *Isoetes* in Mississippi, since *Flora of North America* (1993) listed no *Isoetes* as occurring in the state.

List of Taxa

The following checklist of species from Wayne County is divided into six major groups: lycopods (7 spp.), ferns (22 spp.), gymnosperms (8 spp.), magnoliids and primitive angiosperms (18 spp.), monocots (296 spp.), and eudicots (784 spp.). Within these groups, family and species names are given in alphabetical order. Each species is followed by its author, collector’s last name, collector number, and herbarium acronym where the cited collection voucher is located. An asterisk denotes a presumed non-native species, while an asterisk with a question mark denotes uncertain native status.

LYCOPODS

Isoetaceae

- Isoetes louisianensis* Thieret, *Leonard 9740* (MMNS)
Isoetes melanopoda Gay & Durieu ex Durieu, *McNair 450* (USMS)
Isoetes valida (Engelm.) Clute, *Schafran MS-02-13* (ODU)

Lycopodiaceae

- Locopodiella alopecuroides* (L.) Cranfill, *McNair 932* (USMS)
Lycopodiella prostrata (Harper) Cranfill, *McNair 1160* (USMS)
Pseudolycopodiella caroliniana (L.) Holub, *McNair 931* (USMS)

Selaginellaceae

- Lycopodioides apodum* (L.) Kuntze, *McNair 239* (USMS)

FERNS

Athyriaceae

- Asplenium platyneuron* (L.) B.S.P., *McNair 980* (USMS)
Asplenium resiliens Kunze, *McNair 1220* (USMS)
Athyrium filix-femina (L.) Roth, *McNair 647* (USMS)

Blechnaceae

- Woodwardia areolata* (L.) T. Moore, *McNair 954* (USMS)
Woodwardia virginica (L.) Sm., *McNair 1088* (USMS)

Dennstaedtiaceae

- Pteridium aquilinum* (L.) Kuhn, *McNair 1022* (USMS)

Equisetaceae

- Equisetum hyemale* L., *McNair 659* (USMS)

Dryopteridaceae

- **Cyrtomium falcatum* (L. f.) C. Presl, *McNair 1609* (USMS)

Lygodiaceae

- **Lygodium japonicum* (Thunb.) Sw., *McNair 1899* (USMS)

Onocleaceae

Onoclea sensibilis L., *McNair 973* (USMS)

Ophioglossaceae

Botrychium lunarioides (Michx.) Sw., *McNair 5* (USMS)

Botrypus virginianus (L.) Sw., *McNair 1813* (USMS)

Ophioglossum crotalophoroides Walter, *McNair 6* (USMS)

Ophioglossum engelmannii Prantl, *Leonard 10766* (MMNS)

Sceptridium biternatum (Savigny) Lyon, *McNair 1804* (USMS)

Osmundaceae

Osmunda spectabilis Willd., *McNair 964* (USMS)

Osmundastrum cinnamomeum (L.) C. Presl, *McNair 249* (USMS)

Pteridaceae

Adiantum capillus-veneris L., *McNair 1002* (USMS)

Pteris multifida Poir., *McNair 1655* (USMS)

Thelypteridaceae

**Macrothelypteris torresiana* (Gaudich.) Ching, *McNair 1065* (USMS)

Phegopteris hexagonoptera (Michx.) Fée, *McNair 984* (USMS)

Thelypteris kunthii (Desv.) C.V.Morton, *Leonard 10387* (MMNS)

Thelypteris palustris Schott, *Jones 7679* (MISS)

GYMNOSPERMS

Cupressaceae

Chamaecyparis thyoides (L.) Britton, Sterns & Poggenb., *Brown s.n.* (MISSA)

Juniperus virginiana L., *Jones 9661* (MISS)

Taxodium ascendens (Nutt.) Croom, *Ray s.n.* (MISSA)

Taxodium distichum (L.) Rich., *McNair field identification*

Pinaceae

Pinus echinata Mill., *McNair field identification*

Pinus glabra Walter, *McNair 15* (USMS)

Pinus palustris Mill., *Alford 4242* (USMS)

Pinus taeda L., *McNair field identification*

MAGNOLIIDS AND PRIMITIVE ANGIOSPERMS

Annonaceae

Asimina parviflora (Michx.) Dunal, *McNair 1969* (USMS)

Aristolochiaceae

Asarum canadense L., *McNair 523* (USMS)

Hexastylis arifolia (Michx.) Small, *Jeter 14* (USMS)

Isotrema tomentosum Sims, *McNair s.n.* (USMS)

Cabombaceae

Brasenia schreberi J.F. Gmel., *McNair 864* (USMS)

Illiciaceae

Illicium floridanum J.Ellis, *McNair 229* (USMS)

Lauraceae

Lindera benzoin (L.) Blume, *McNair 1946* (USMS)

Persea palustris (Raf.) Sarg., *Nicholson 54* (USMS)

Sassafras albidum (Nutt.) Nees, *Louis 11700* (MISS)

Magnoliaceae

Liriodendron tulipifera L., *McNair 470* (USMS)

Magnolia acuminata (L.) L., *McNair 504* (USMS)

Magnolia grandiflora L., *Louis 11723* (MISS)

Magnolia macrophylla Michx., *McNair 510* (USMS)

Magnolia pyramidata Bartram, *McNair 517* (USMS)

Magnolia virginiana L., *McNair s.n.* (USMS)

Nymphaeaceae

Nymphaea odorata Ait., *McNair 861* (USMS)

Saururaceae

Saururus cernuus L., *McNair 827* (USMS)

Schisandraceae

Schisandra glabra (E.P. Bicknell) Rehder, *Leonard 10398* (MMNS)

MONOCOTS

Agavaceae

- Camassia scilloides* (Raf.) Cory, *McNair 286* (USMS)
Manfreda virginica (L.) Salisb. ex Rose, *McNair 875* (USMS)
Yucca filamentosa Wood, *McNair 1047* (USMS)
Yucca recurvifolia Salisb., *McNair 1060* (USMS)

Alismataceae

- Echinodorus cordifolius* (L.) Griseb., *McNair 828* (USMS)
Sagittaria graminea Michx., *McNair 1637* (USMS)
Sagittaria lancifolia L., *McNair 1339* (USMS)
Sagittaria latifolia Willd., *McNair 863* (USMS)

Amaryllidaceae

- **Allium ampeloprasum* L., *McNair 655* (USMS)
Allium canadense var. *canadense* L., *McNair 394* (USMS)
Allium canadense var. *mobile* (Regel) Ownbey, *Gordon 1041* (MMNS)
**Crinum bulbispermum* (Burm.) Milne-Redh. & Schweick., *McNair 713* (USMS)
Hymenocallis occidentalis (LeConte) Kunth, *McNair s.n.* (USMS)
**Lycoris radiata* Miq., *McNair s.n.* (USMS)
**Narcissus × odoratus* L. (pro sp.), *McNair 25* (USMS)
Nothoscordum bivalve (L.) Kuntze, *Jones 4899* (MISS)
**Tristagma uniflorum* (Lindl.) Traub, *McNair 278* (USMS)
Zephyranthes atamasca (L.) Herbert, *McNair 265* (USMS)
Zephyranthes simpsonii Chapm., *McNair 588* (USMS)

Araceae

- Arisaema dracontium* (L.) Schott, *McNair 768* (USMS)
Arisaema triphyllum (L.) Schott, *McNair 1033* (USMS)
Lemna minor L., *McNair s.n.* (USMS)
Orontium aquaticum L., *McNair 9* (USMS)
**Xanthosoma sagittifolium* (L.) Schott, *McNair 869* (USMS)

Areaceae

- Rhapidophyllum hystrix* (Pursh) H. Wendl. & Drude ex Drude, *Gordon 1110* (MISS)
Sabal minor (Jacq.) Pers., *McNair 348* (USMS)

Bromeliaceae

Tillandsia usneoides L., Jones 16333 (MISS)

Colchicaceae

Uvularia floridana Chapm., McNair 1133 (USMS)

Uvularia perfoliata L., McNair 1150 (USMS)

Commelinaceae

**Commelina diffusa* Zoll. ex C.B. Clarke, McDaniel 30847 (MMNS)

Commelina virginica L., McNair 1260 (USMS)

Tradescantia hirsuticaulis Small, McNair 509 (USMS)

Tradescantia ohiensis Raf., McNair 128 (USMS)

**Tradescantia pallida* (Rose) D.R. Hunt, McNair 1758 (USMS)

Tradescantia subaspera Ker Gawl., McNair 986 (USMS)

Cyperaceae

Bulbostylis coarctata (Elliott) Fernald, Nicholson 156 (USMS)

Carex basiantha Steud., McNair 528 (USMS)

Carex blanda Dewey, McNair 423 (USMS)

Carex bushii Mack., McNair 1871 (USMS)

Carex caroliniana Schwein., McNair 1890 (USMS)

Carex cephalophora Muhl. ex Willd., McNair 397 (USMS)

Carex cherokeensis Schwein., McNair 883 (USMS)

Carex complanata Torr. & Hook., McNair 841 (USMS)

Carex dasycarpa Muhl., McNair 605 (USMS)

Carex gigantea Rudge, McNair 762 (USMS)

Carex glaucescens Elliot, McNair s.n. (USMS)

Carex leptalea Wahlenb., McNair 546 (USMS)

Carex lonchocarpa Willd., McNair 761 (USMS)

Carex louisianica L.H. Bailey, McNair 868 (USMS)

Carex lupulina Muhl. ex Willd., McNair 880 (USMS)

Carex nigromarginata Schwein., Hays 3137 (MMNS)

Carex oxylepis Torr. & Hook., McNair 427 (USMS)

Carex retroflexa Muhl. ex Willd., McDaniel 30504 (MISS)

Carex seorsa Howe, McNair 396 (USMS)

Carex styloflexa Buckley, Bryson 21360 (MMNS)

Carex tenax Chapm., McNair 811 (USMS)

Carex texensis (Torr.) L.H. Bailey, McNair 908 (USMS)

Carex triangularis Boeckeler, McNair 488 (USMS)

Carex willdenowii Schkuhr ex Willd., Lucas 297 (MMNS)

Cyperus echinatus (L.) Wood, *McNair 1055* (USMS)
Cyperus erythrorizos Muhl., *McNair 1126* (USMS)
Cyperus esculentus L., *McDaniel 30837* (IBE)
Cyperus filiculmis A.Rich., *McNair 1021* (USMS)
Cyperus haspan L., *McDaniel 30812* (IBE)
Cyperus iria L., *McNair 1396* (USMS)
Cyperus odoratus L., *Sullivan s.n.* (MMNS)
Cyperus polystachyos (Torr.) Fernald, *McDaniel 30817* (IBE)
Cyperus pseudovegetus Steud., *Jones 16406* (MISS)
Cyperus strigosus L., *McNair 718* (USMS)
Cyperus virens Willd. ex Kunth, *McNair 1398* (USMS)
Eleocharis bicolor Chapm., *McNair 842* (USMS)
Eleocharis obtusa (Willd.) J.A. Schultes, *McNair 553* (USMS)
Eleocharis tuberculosa (Michx.) Roem. & Schult., *McNair 923* (USMS)
Fimbristylis autumnalis Roem. & Schult., *McNair 1340* (USMS)
Fimbristylis miliacea (L.) Vahl, *Sullivan s.n.* (MMNS)
**Fimbristylis schoenoides* (Retz.) Vahl, *McNair 1520* (USMS)
Fimbristylis vahlii (Lam.) Link, *McNair 1338* (USMS)
Isolepis carinata Hook. & Arn. ex Torr., *McNair 1768* (USMS)
Kyllinga odorata Vahl, *McNair 735* (USMS)
Kyllinga pumila (Steud.) Dandy, *McDaniel 30807* (IBE)
Rhynchospora cephalantha A. Gray, *McNair 921* (USMS)
Rhynchospora chalarocephala Fernald & Gale, *Ray 7037* (MISSA)
Rhynchospora corniculata (Lam.) A. Gray, *McNair 965* (USMS)
Rhynchospora crinipes Gale, *Kral 83382* (USCH)
Rhynchospora distans (Michx.) Vahl, *McNair 947* (USMS)
Rhynchospora elliotii A. Dietr., *McNair 946* (USMS)
Rhynchospora glomerata (L.) Vahl, *Ray 7017* (MISSA)
Rhynchospora gracilentia A. Gray, *McNair 949* (USMS)
Rhynchospora inexpansa (Michx.) Vahl, *McNair 936* (USMS)
Rhynchospora latifolia (Baldw. ex Elliot) W.W. Thomas, *McNair 1119* (USMS)
Rhynchospora megalocarpa A. Gray, *Nicholson 155* (USMS)
Rhynchospora plumosa Elliot, *Gordon 1876* (MMNS)
Rhynchospora rariflora (Michx.) Elliot, *McNair 843* (USMS)
Scirpus cyperinus (L.) Kunth, *McNair 1110* (USMS)
Scleria ciliata var. *ciliata* Michx., *McNair s.n.* (USMS)
Scleria muehlenbergii Steud., *McNair 1231* (USMS)
Scleria nitida Muhl. ex Willd., *McNair 813* (USMS)
Scleria oligantha Michx., *McNair 1149* (USMS)
Scleria pauciflora var. *caroliniana* (Willd.) Alph. Wood, *McNair 834* (USMS)

Eriocaulaceae

- Eriocaulon compressum* Lam., *McNair* 835 (USMS)
Eriocaulon decangulare L., *McNair* 855 (USMS)
Lachnocaulon anceps (Walter) Morong, *McNair* 667 (USMS)

Haemodoraceae

- Lachnanthes caroliana* (Lam.) Dandy, *McNair* 878 (USMS)

Hydrocharitaceae

- **Blyxa aubertii* Rich., *McNair* 1650 (USMS)

Hypoxidaceae

- Hypoxis hirsuta* (L.) Coville, *McNair* 334 (USMS)

Iridaceae

- **Gladiolus dalenii* Van Geel, *McNair* 614 (USMS)
**Gladiolus* × *gandavensis* Van Houtte, *McNair* 757 (USMS)
Iris verna L., *McNair* 336 (USMS)
Iris virginica L., *McNair* 589 (USMS)
Sisyrinchium albidum Raf., *McNair* 1878 (USMS)
Sisyrinchium angustifolium Phil., *Hays* 3141 (MMNS)
Sisyrinchium atlanticum (Bickn.) Ahles, *Jones* 4903 (MISS)
Sisyrinchium rosulatum E.P. Bicknell, *McNair* 1877 (USMS)

Juncaceae

- Juncus biflorus* Elliot, *McNair* 807 (USMS)
Juncus brachycarpus Engelm., *Jones* 16416 (MISS)
Juncus bufonius L., *McNair* 728 (USMS)
Juncus coriaceus Mackenzie, *McNair* 1016 (USMS)
Juncus debilis A. Gray, *McNair* 945 (USMS)
Juncus dichotomus Ell., *McNair* 1846 (USMS)
Juncus diffusissimus Buckley, *McNair* 862 (USMS)
Juncus elliottii Chapm., *McNair* 550 (USMS)
Juncus longii Fernald, *McNair* 935 (USMS)
Juncus repens Michx., *McNair* 1378 (USMS)
Juncus scirpoides Lam., *Jones* 14019 (MISS)
Juncus tenuis Willd., *McNair* s.n. (USMS)
Luzula bulbosa (Alph. Wood) Smyth & Smyth, *McNair* 1786 (USMS)
Luzula echinata (Small) F. J. Herm., *McNair* 262 (USMS)

Liliaceae

Lilium catesbaei Walter, *Clonts 565* (IBE)

Mayacaceae

Mayaca fluviatilis Aubl., *McNair 849* (USMS)

Melanthiaceae

Amianthium muscotoxicum (Walter) A. Gray, *McNair 574* (USMS)

Zigadenus glaberrimus Michx., *McNair 1087* (USMS)

Nartheciaceae

Aletris aurea Walter, *McNair 745* (USMS)

Aletris farinosa L., *McNair 535* (USMS)

Orchidaceae

Calopogon pallidus Chapm., *McNair 749* (USMS)

Calopogon tuberosus (L.) Britton, Sterns & Poggenb., *McNair 774* (USMS)

Habenaria repens Nutt., *McNair 1255* (USMS)

Listera australis Lindl., *McNair 1781* (USMS)

Platanthera ciliaris (L.) Lindl., *McNair 1080* (USMS)

Platanthera integra (Nutt.) A. Gray ex Beck, *McNair 1084* (USMS)

Platanthera nivea (Nutt.) Luer, *McNair 831* (USMS)

Pogonia ophioglossoides (L.) Ker Gawl., *McNair 581* (USMS)

Ponthieva racemosa (Walter) C. Mohr, *McNair 1052* (USMS)

Spiranthes praecox (Walter) S. Watson, *McNair 650* (USMS)

Spiranthes vernalis Engelm. & A. Gray, *McNair 666* (USMS)

Tipularia discolor (Pursh) Nutt., *McNair 1801* (USMS)

Poaceae

Agrostis elliotiana Schult., *McNair 1784* (USMS)

Agrostis hyemalis (Walter) Britton, Sterns & Poggenb., *McNair 459* (USMS)

Agrostis perennans (Walter) Tuck., *McNair 1852* (USMS)

**Aira elegans* Willd. ex Kunth, *McNair 1869* (USMS)

Andropogon gerardii Vitman, *McNair 1529* (USMS)

Andropogon glomeratus (Walt.) B.S.P., *McNair 1427* (USMS)

Andropogon ternarius Michx., *Nicholson 153* (USMS)

Andropogon virginicus var. *virginicus* L., *McNair 495* (USMS)

Anthenantia rufa (Nutt.) Schult., *Ray 5037* (MISS)

Anthenantia villosa (Michx.) P. Beauv., *McNair 1241* (USMS)

Aristida beyrichiana Trin. & Rupr., *Nicholson 152* (USMS)

Aristida oligantha Michx., *Wieland 5550* (MMNS)
Aristida purpurascens Poir., *Sullivan s.n.* (MMNS)
Aristida tuberculosa Nutt., *Nicholson 148* (USMS)
Aristida virgata Trin., *Nicholson 125* (USMS)
Arundinaria gigantea Nutt., *McNair 1740* (USMS)
Arundinaria tecta (Walter) Muhl., *McNair 1843* (USMS)
 **Arundo donax* L., *McNair 1362* (USMS)
 **Avena sativa* L., *McNair 598* (USMS)
 **Bothriochloa laguroides* (DC.) Herter, *Wieland 5548* (MMNS)
Bouteloua curtipendula var. *curtipendula* (Michx.) Torr., *McNair 1438* (USMS)
 **Briza minor* L., *McNair 34* (USMS)
 **Bromus catharticus* Vahl, *Jones 4926* (MISS)
 **Bromus japonicus* Thunb. ex Murr., *McNair 1850* (USMS)
 **Bromus racemosus* L., *McNair 372* (USMS)
 **Bromus secalinus* L., *McNair 1873* (USMS)
Cenchrus longispinus (Hack.) Fern., *McNair s.n.* (USMS)
Chasmanthium latifolium (Michx.) Yates, *McNair 802* (USMS)
Chasmanthium sessiliflorum (Poir.) Yates, *Nicholson 127* (USMS)
Chloris virgata Sw., *McNair 1005* (USMS)
Coelorachis tessellata (Steud.) Nash, *Leonard 10890* (MMNS)
Coleataenia anceps ssp. *anceps* (Michx.) Soreng, *McNair 1332* (USMS)
Ctenium aromaticum (Walter) Alph. Wood, *McNair 1090* (USMS)
 **Dactylis glomerata* L., *McNair 554* (USMS)
 **Dactyloctenium aegyptium* (L.) Willd., *McNair 1316* (USMS)
Danthonia sericea Nutt., *McNair 492* (USMS)
Dichantheium commutatum (Schult.) Gould, *McNair 1861* (USMS)
Dichantheium aciculare (Desv. ex Poir.) Gould & C.A. Clark, *Wieland 8878* (MMNS)
Dichantheium acuminatum var. *lindheimeri* (Nash) Gould & C.A. Clark, *Gordon 1047* (MMNS)
Dichantheium boscii (Poir.) Gould & C.A. Clark, *McNair 1032* (USMS)
Dichantheium commutatum (Schult.) Gould, *Wieland 9604* (MMNS)
Dichantheium dichotomum (L.) Gould, *Nicholson 87* (USMS)
Dichantheium laxiflorum (Lam.) Gould, *Nicholson 95* (USMS)
Dichantheium linearifolium (Scribn. ex Nash) Gould, *Nicholson 88* (USMS)
Dichantheium longiligulatum (Nash) Freckmann, *Jones 16392* (MISS)
Dichantheium nudicaule (Vasey) B.F. Hansen & Wunderlin, *Leonard 10888* (MMNS)
Dichantheium portoricense (Ham.) B.F. Hansen & Wunderlin, *Nicholson 69* (USMS)
Dichantheium scoparium (Lam.) Gould, *Jones 16381* (MISS)
Dichantheium sphaerocarpon (Elliott) Gould, *Leonard 10941* (USMS)
Dichantheium villosissimum (Nash) Freckmann, *McNair 530* (USMS)
 **Digitaria ischaemum* (Schreb.) Schreb. ex Muhl., *Rogers 4779* (MISS)
Digitaria villosa (Walter) Pers., *Rogers 4780* (MISS)
 **Echinochloa colonum* (L.) Link, *McNair 1006* (USMS)

**Echinochloa crusgalli* var. *crusgalli* (L.) P. Beauv, *McNair 1191* (USMS)
Echinochloa muricata var. *muricata* (P. Beauv.) Fernald, *McNair 1343* (USMS)
**Eleusine indica* (L.) Gaertn., *McNair 1318* (USMS)
Elymus virginicus L., *McNair 1419* (USMS)
Eragrostis capillaris (L.) Nees, *McNair s.n.* (USMS)
Eragrostis elliotii S. Watson, *Nicholson 123* (USMS)
Eragrostis hypnoides (Lam.) B.S.P., *McNair 1664* (USMS)
**Eragrostis japonica* Trin., *McNair 1341* (USMS)
Eragrostis pectinacea (Michx.) Nees ex Steud., *McNair 1342* (USMS)
Eragrostis refracta (Muhl.) Scribn., *McDaniel 30852* (MMNS)
Eragrostis secundiflora J. Presl, *McNair 1528* (USMS)
Eragrostis spectabilis (Pursh) Steud., *Rogers 4752* (MISS)
**Eremochloa ophiuroides* (Munro) Hack., *McNair 1656* (USMS)
Hordeum pusillum Nutt., *Nicholson 33* (USMS)
**Imperata cylindrica* (L.) P. Beauv., *McNair 325* (USMS)
Leersia hexandra Sw., *McNair 1445* (USMS)
Leersia lenticularis Michx., *McNair 1626* (USMS)
Leersia virginica Willd., *McNair 1440* (USMS)
Leptochloa panicea (Retz.) Ohwi, *McNair s.n.* (USMS)
Limnodea arkansana (Nutt.) L.H. Dewey, *Jones 4915* (MISS)
**Lolium multiflorum* Lam., *Nicholson 32* (USMS)
**Lolium perenne* L., *McNair 116* (USMS)
Melica mutica Walter, *McNair 801* (USMS)
Muhlenbergia capillaris (Lam.) Trin., *McNair 1291* (USMS)
Muhlenbergia expansa (Poir.) Trin., *McNair 1122* (USMS)
Muhlenbergia schreberi J.F. Gmel., *McNair 1620* (USMS)
Oplismenus hirtellus ssp. *setarius* (Lam.) Mez ex Ekman, *McNair 1041* (USMS)
Panicum brachyanthum Steud., *Nicholson 143* (USMS)
Panicum dichotomiflorum Michx., *McNair 1420* (USMS)
Panicum flexile (Gattinger) Scribn., *Leonard 10900* (USMS)
Panicum repens Thwaites, *McNair 1389* (USMS)
Panicum rigidulum Bosc ex Nees, *McNair 1417* (USMS)
Panicum verrucosum Muhl., *McNair 1233* (USMS)
Panicum virgatum var. *virgatum* L., *McNair 1236* (USMS)
Paspalum bifidum (Bertol.) Nash, *Leonard 10939* (USMS)
Paspalum boscianum Flueggé, *Nicholson 129* (USMS)
Paspalum fluitans (Elliott) Kunth, *McNair 1441* (USMS)
Paspalum laeve Michx., *Leonard 10937* (USMS)
Paspalum notatum Flugge, *McNair 1911* (USMS)
Paspalum plicatulum Michx., *McNair 1537* (USMS)
Paspalum praecox Walter, *Leonard 10936* (USMS)
Paspalum setaceum Michx., *Leonard 10942* (MISS)

**Paspalum urvillei* Steud., *Jones 16404* (MISS)
Phalaris caroliniana Walt., *McNair 1875* (USMS)
 **Phyllostachys aurea* Carrière ex A. Rivière & C. Rivière, *McNair 1730* (USMS)
Piptochaetium avenaceum (L.) Parodi, *McNair 366* (USMS)
 **Poa annua* L., *McNair 23* (USMS)
Poa autumnalis Muhl. ex Elliot, *McNair 418* (USMS)
 **Polypogon interruptus* Kunth, *McNair 1515* (USMS)
 **Polypogon monspeliensis* (L.) Desf., *McNair 632* (USMS)
 **Rottboellia cochinchinensis* (Lour.) W.D. Clayton, *McNair 1363* (USMS)
Saccharum baldwinii Spreng., *McNair 1442* (USMS)
Saccharum brevibarbe (Michx.) Pers., *Jones 9717* (MISS)
Saccharum giganteum (Walter) Pers., *McNair 1252* (USMS)
Sacciolepis striata (L.) Nash, *McNair 1387* (USMS)
Schizachyrium scoparium (Michx.) Nash, *Nicholson 137* (USMS)
Schizachyrium tenerum Nees., *Nicholson 126* (USMS)
Setaria parviflora (Poir.) Kerguélen, *McNair 755* (USMS)
 **Setaria pumila* ssp. *pumila* (Poir.) Roemer & J.A. Schultes, *McNair 1344* (USMS)
Sorghastrum apalachicolense D.W. Hall, *Leonard 10911* (MISS)
Sorghastrum nutans (L.) Nash, *McNair 1433* (USMS)
 **Sorghum halepense* (L.) Pers., *McNair 1007* (USMS)
Sphenopholis filiformis (Chapm.) Scribn., *McNair 297* (USMS)
Sphenopholis obtusata (Michx.) Scribn., *McNair 1876* (USMS)
Sporobolus clandestinus (Biehler) Hitchc., *McNair s.n.* (USMS)
 **Sporobolus indicus* R.Br., *McNair 1497* (USMS)
Sporobolus junceus Kunth., *McNair 1546* (USMS)
Sporobolus vaginiflorus var. *vaginiflorus* (Torr. ex A. Gray) Alph. Wood, *McNair 1659* (USMS)
Steinchisma hians (Elliott) Nash, *McNair 1518* (USMS)
Stenotaphrum secundatum (Walt.) Kuntze, *McNair 189* (USMS)
Tridens ambiguus (Elliott)Schult., *McNair 1547* (USMS)
Tridens carolinianus (Steud.) Henr., *Leonard 10914* (USMS)
Tridens flavus (L.) A.S. Hitchc., *McNair s.n.* (USMS)
Tridens strictus (Nutt.) Nash, *Leonard 10933* (MMNS)
Triplasis americana P.Beauv., *McNair 1245* (USMS)
Tripsacum dactyloides (L.) L., *McNair 1301* (USMS)
Urochloa texana (Buckl.) R. Webster, *McNair 1511* (USMS)
Vulpia octoflora (Walt.) Rydb., *Nicholson 34* (USMS)

Potamogetonaceae

Potamogeton diversifolius Raf., *McNair 1837* (USMS)

Ruscaceae

**Liriope muscari* L.H.Bailey, *McNair* 985 (USMS)

Smilacaceae

Smilax bona-nox L., *McNair* 1894 (USMS)
Smilax glauca Walter, *McNair* 860 (USMS)
Smilax hispida Muhl. ex Torr., *McNair* 1967 (USMS)
Smilax laurifolia L., *McNair* 213 (USMS)
Smilax lasioneura Hook., *Sullivan s.n.*(MMNS)
Smilax pumila Walter, *McNair* 250 (USMS)
Smilax rotundifolia L., *Nicholson* 16 (USMS)
Smilax smallii Morong, *McNair* 175 (USMS)

Tofieldiaceae

Triantha racemosa (Walter) Small, *McNair* 1118 (USMS)

Trilliaceae

Trillium cuneatum Raf., *McNair* 80 (USMS)
Trillium stamineum Harbison, *McNair* 1814 (USMS)

Typhaceae

Sparganium americanum Nutt., *McNair* 827 (USMS)
Typha latifolia L., *McNair* 1208 (USMS)

Xanthorrhoeaceae

**Hemerocallis fulva* L., *McNair* 730 (USMS)

Xyridaceae

Xyris ambigua Beyrich ex Kunth. *McNair* field observation
Xyris caroliniana Walter, *Jones* 14011 (MISS)
Xyris platylepis Chapman, *McNair* field observation

EUDICOTS

Acanthaceae

Justicia americana Vahl, *Gordon* 1107 (MMNS)
Justicia ovata var. *ovata* (Walter) Lindau, *McNair* 1914 (USMS)
Ruellia caroliniensis (Walter) Steud., *McNair* 694 (USMS)
Ruellia humilis Pohl ex Nees, *McNair* 1178 (USMS)

Ruellia strepens L., *McNair 524* (USMS)
Yeatesia viridiflora (Nees) Small, *McNair 1183* (USMS)

Adoxaceae

Sambucus canadensis L., *McNair 672* (USMS)
Viburnum dentatum L., *Ray 5066* (USMS)
Viburnum nudum L., *Nicholson 52* (USMS)
Viburnum rufidulum Raf., *McNair 1971* (USMS)

Altingiaceae

Liquidambar styraciflua L., *McNair 1900* (USMS)

Amaranthaceae

**Alternanthera philoxeroides* (Mart.) Griseb., *McNair 678* (USMS)
**Amaranthus palmeri* S. Wats., *McNair 1305* (USMS)
**Amaranthus spinosus* L., *McNair 1335* (USMS)
Chenopodium album L., *McNair 910* (USMS)
*?*Dysphania ambrosioides* (L.) Mosyakin & Clemants, *McNair 1364* (USMS)
Froelichia floridana (Nutt.) Moq., *McNair 1424* (USMS)
**Gomphrena serrata* Pav. ex Moq., *McNair 1298* (USMS)

Anacardiaceae

Rhus copallinum L., *Jones 16365* (MISS)
Rhus glabra L., *McNair 660* (USMS)
Toxicodendron pubescens Mill., *McNair 490* (USMS)
Toxicodendron radicans (L.) Kuntze, *Nicholson 14* (USMS)
Toxicodendron vernix (L.) Kuntze *McNair field identification*

Apiaceae

**Bowlesia incana* Ruiz & Pav., *McNair 167* (USMS)
Centella asiatica (L.) Urban, *McNair 1113* (USMS)
Chaerophyllum tainturieri Hook., *McNair 111* (USMS)
Cryptotaenia canadensis DC., *McNair 609* (USMS)
**Cyclospermum leptophyllum* (Pers.) Sprague ex Britt. & Wilson, *McNair 669* (USMS)
**Daucus carota* L., *McNair 800* (USMS)
Daucus pusillus Michx., *McNair 1860* (USMS)
Eryngium integrifolium Walter, *McNair 1089* (USMS)
Eryngium prostratum Nutt. ex DC., *McNair 734* (USMS)
Eryngium yuccifolium Michx., *McNair 1872* (USMS)
Lilaeopsis carolinensis J.M.Coult. & Rose, *McNair 1464* (USMS)

Oxypolis rigidior (L.) Raf., *McNair 1562* (USMS)
Ptilimnium capillaceum (Michx.) Raf., *Jones 16407* (MISS)
Sanicula canadensis L., *McNair 507* (USMS)
Sanicula odorata (Raf.) K.M.Pryer & L.R.Phillippe, *McNair 382* (USMS)
**Scandix pecten-veneris* L., *McNair 417* (USMS)
Spermolepis divaricata (Walt.) Raf. ex Ser., *McNair 1859* (USMS)
Thaspium trifoliatum (L.) A. Gray, *McNair 1001* (USMS)
Tiedemannia filiformis ssp. *filiformis* (Walter) Feist & S.R. Downie, *McNair 1078* (USMS)
Zizia aurea (L.) W.D.J. Koch, *McNair 282* (USMS)

Apocynaceae

Amsonia tabernaemontana var. *tabernaemontana* Walter, *McNair 1749* (USMS)
Apocynum cannabinum L., *McNair 1048* (USMS)
Asclepias amplexicaulis Sm., *McNair 1906* (USMS)
Asclepias humistrata Walter, *Nicholson 47* (USMS)
Asclepias lanceolata Walter, *McNair 703* (USMS)
Asclepias michauxii Decne., *McNair 566* (USMS)
Asclepias obovata Elliot, *McNair 848* (USMS)
Asclepias tuberosa L., *McNair 791* (USMS)
Asclepias variegata L., *McNair 644* (USMS)
Asclepias verticillata L., *Ray 5062* (MISSA)
Asclepias viridiflora Raf., *McNair 1058* (USMS)
Asclepias viridis Walter, *McNair 624* (USMS)
Gonolobus suberosus (Walter) Shinnery, *Wieland 9884* (MMNS)
Matelea carolinensis (Jacq.) Woodson, *Leonard 10879* (MMNS)
Thrysanthella difformis (Walter) A. Gray, *Jones 16380* (MISS)
**Vinca major* L., *McNair 257* (USMS)

Aquifoliaceae

Ilex ambigua (Michx.) Torr., *McNair 1246* (USMS)
Ilex coriacea (Pursh) Chapm., *McNair 340* (USMS)
Ilex decidua var. *decidua* Walter, *McNair 599* (USMS)
Ilex glabra (L.) A. Gray, *Nicholson 40* (USMS)
Ilex montana Torr. & A. Gray ex A. Gray, *Sullivan s.n.* (MMNS)
Ilex opaca Aiton, *McNair 1893* (USMS)
Ilex verticillata A.Gray, *McNair 974* (USMS)
Ilex vomitoria Ait., *Nicholson 18* (USMS)

Araliaceae

Aralia spinosa L., *Jones 5541* (MISS)
Hydrocotyle verticillata Thunb., *McNair 830* (USMS)

Panax quinquefolius L., *McNair 1038* (USMS)

Asteraceae

Acmella repens (Walter) Rich., *McNair 1337* (USMS)
Ageratina altissima var. *altissima* (L.) King & H. Rob., *McNair 1302* (USMS)
Ageratina aromatica (L.) Spach, *McNair 1045* (USMS)
Ambrosia artemisiifolia L., *McNair 1394* (USMS)
Ambrosia trifida var. *trifida* Cronquist, *McNair 1206* (USMS)
Arnoglossum ovatum var. *ovatum* (Walter) H.E. Rob., *McNair 1073* (USMS)
Arnoglossum plantagineum Raf., *McNair 1057* (USMS)
Baccharis halimifolia Moench, *McNair 1903* (USMS)
**Bidens alba* (L.) DC., *McNair 1370* (USMS)
Bidens aristosa Britton, *Louis 13986* (MISS)
Bidens bipinnata L., *Louis 7225* (MISS)
Bidens frondosa L., *McNair 1323* (USMS)
Bidens mitis (Michx.) Sherff, *McNair 1635* (USMS)
Bigelovia nudata ssp. *nudata* (Michx.) DC., *McNair 1085* (USMS)
Boltonia diffusa Ell., *Jones 14008* (MISS)
Brintonia discoidea (Elliott) Greene, *Louis 13976* (MISS)
**Carduus nutans* L., *McNair 608* (USMS)
Chaptalia tomentosa Vent., *McNair 101* (USMS)
Chrysogonum virginianum L., *McNair 232* (USMS)
Chrysopsis mariana (L.) Shinnery, *Louis 13997* (MISS)
**Chrysopsis pilosa* Nutt., *McNair 710* (USMS)
Cirsium carolinianum (Walter) Fernald & B.G. Schub., *Ray 5059* (MISSA)
Cirsium horridulum Michx., *McNair 1867* (USMS)
**Cirsium vulgare* (Savi) Ten., *McNair 623* (USMS)
Conoclinium coelestinum DC., *McNair 914* (USMS)
Conyza canadensis var. *canadensis* Cronquist, *Louis 11727* (MISS)
Conyza canadensis var. *pusilla* (Nutt.) Cronq., *Louis 11715* (MISS)
Coreopsis grandiflora Hogg ex Sweet, *Gordon 1866* (MMNS)
Coreopsis lanceolata L., *Jones 4891* (MISS)
Coreopsis linifolia Nutt., *McNair 1229* (USMS)
Coreopsis major Walter, *McNair 693* (USMS)
Coreopsis tinctoria Nutt., *McNair 673* (USMS)
Coreopsis tripteris L., *McNair 1115* (USMS)
Croptilon divaricatum Raf., *McNair 1334* (USMS)
Eclipta prostrata (L.) L., *McNair 1192* (USMS)
Elephantopus carolinianus Willd., *McNair 1030* (USMS)
Elephantopus elatus Bertol., *Nicholson 105* (USMS)
Elephantopus tomentosus L., *McNair 988* (USMS)

Erechtites hieraciifolius (L.) Raf. ex DC., *McNair 913* (USMS)
Erigeron annuus (L.) Pers., *McNair 857* (USMS)
Erigeron philadelphicus L., *McNair 60* (USMS)
Erigeron strigosus Muhl. ex Willd., *McNair 1845* (USMS)
Erigeron vernus (L.) Torr. & A. Gray, *Jones 13998* (MISS)
Eupatorium album L., *McNair 1086* (USMS)
Eupatorium capillifolium (Lam.) Small, *Louis 13959* (MISS)
Eupatorium compositifolium Walter, *Nicholson 164* (USMS)
Eupatorium hyssopifolium L., *McNair 1026* (USMS)
Eupatorium leucolepis (DC.) Torr. & A. Gray, *Louis 7255* (MMNS)
Eupatorium perfoliatum L., *McNair 1641* (USMS)
Eupatorium rotundifolium L., *McNair 933* (USMS)
Eupatorium semiserratum DC., *McNair 1157* (USMS)
Eupatorium serotinum Michx., *Louis 13988* (MISS)
Eupatorium torryanum Short & Peter, *McNair 941* (USMS)
Eurybia hemispherica (Alexander) G.L. Nesom, *McNair 1109* (USMS)
Euthamia caroliniana (L.) Greene ex Porter & Britton, *McNair 1406* (USMS)
Eutrochium fistulosum (Barratt) E.E. Lamont, *McNair 1159* (USMS)
**Facelis retusa* (Lam.) Sch. Bip., *McNair 1849* (USMS)
Fleischmannia incarnata (Walt.) King & H.E. Robins., *McNair 1355* (USMS)
Gaillardia aestivalis (Walter) H. Rock, *McNair 959* (USMS)
Gamochaeta antillana (Urb.) Anderb., *McNair 447* (USMS)
Gamochaeta argyrinea G.L. Nesom, *Nicholson 67* (USMS)
**Gamochaeta coarctata* (Willd.) Kerguelen, *McNair 1851* (USMS)
**Gamochaeta pennsylvanica* (Willd.) Cabrera, *McNair 446* (USMS)
Gamochaeta purpurea (L.) Cabrera, *Nicholson 26* (USMS)
Helenium amarum var. *amarum* (Raf.) H. Rock, *McNair 729* (USMS)
Helenium autumnale L., *McNair s.n.* (USMS)
Helenium brevifolium (Nutt.) Alph. Wood, *Jones 4934* (MISS)
Helenium flexuosum Raf., *McNair 1908* (USMS)
Helianthus angustifolius L., *McNair 1321* (USMS)
Helianthus grosseserratus Martens, *McNair 877* (USMS)
Helianthus heterophyllus Nutt., *McNair 1101* (USMS)
Helianthus radula Torr. & Gray, *McNair 1807* (USMS)
Helianthus resinosus Small, *McNair 1322* (USMS)
**Heterotheca latifolia* var. *latifolia* Buckley, *McNair 1164* (USMS)
Hieracium gronovii Willd ex Froel., *McNair 1179* (USMS)
Hypochaeris glabra L., *McNair 1853* (USMS)
Hypochaeris radicata L., *McNair 464* (USMS)
Ionactis linariifolius (L.) Greene, *Nicholson 162* (USMS)
Iva annua L., *McNair 1250* (USMS)
Krigia caespitosa (Raf.) K.L. Chambers, *McNair 136* (USMS)

Krigia dandelion (L.) Nutt., *McNair* 275 (USMS)
Krigia oppositifolia Raf., *Jones* 5509 (MISS)
Krigia virginica (L.) Willd., *McNair* 137 (USMS)
Lactuca canadensis L., *McNair* 1857 (USMS)
Lactuca floridana Gaertn., *McNair* 1173 (USMS)
Lactuca serriola L., *McNair* 783 (USMS)
Leucanthemum vulgare Lam., *McNair* 451 (USMS)
Liatris gracilis Pursh, *Nicholson* 136 (USMS)
Liatris spicata var. *resinosa* (Nutt.) Gaiser, *McNair* 1114 (USMS)
Liatris squarrosa Willd., *McNair* 926 (USMS)
Liatris squarrolosa Michx., *McNair* 1350 (USMS)
Melanthera nivea Small, *McNair* 1061 (USMS)
Mikania scandens Willd., *Louis* 7221 (MISS)
Nabalus altissimus Hook., *McNair* 1570 (USMS)
Packera anonyma (Alph. Wood) W.A. Weber & Á. Löve, *McNair* 491 (USMS)
Packera glabella (Poir.) C. Jeffrey, *McNair* 106 (USMS)
Pityopsis aspera var. *adenolepis* (Fernald) Semple & F. D. Bowers, *McNair* 1025 (USMS)
Pityopsis graminifolia (Michx.) Nutt., *Nicholson* 167 (USMS)
Pluchea camphorata (L.) DC., *McNair* 1224 (USMS)
Pluchea foetida var. *foetida* (L.) DC., *McNair* 942 (USMS)
Pseudognaphalium helleri (Britton) Anderb., *Louis* 7253 (MMNS)
Pseudognaphalium obtusifolium (L.) Hilliard & B.L.Burt, *Louis* 7230 (MMNS)
Pyrrhopappus carolinianus DC., *McNair* 593 (USMS)
Ratibida pinnata Barnhart, *McNair* 799 (USMS)
Rudbeckia fulgida Meehan, *Leonard* 10903 (MMNS)
Rudbeckia hirta L., *McNair* 1907 (USMS)
Sericocarpus linifolius (L.) Britton, Sterns & Poggenb., *McNair* 707 (USMS)
Sericocarpus tortifolius Nees, *McNair* 1238 (USMS)
Silphium asteriscus L., *McNair* 818 (USMS)
Silphium integrifolium Michx., *McNair* 1293 (USMS)
Silphium lacianatum L., *McNair* 1793 (USMS)
Silphium radula Nutt., *McNair* s.n. (USMS)
Smallanthus uvedalius (L.) Mackenzie ex Small, *McNair* 823 (USMS)
Solidago altissima var. *altissima* L., *McNair* 1138 (USMS)
Solidago bicolor L., *McNair* 1645 (USMS)
Solidago caesia L., *Leonard* 10600 (MMNS)
Solidago canadensis L., *Louis* 13955 (MISS)
Solidago odora Michx., *Louis* 13961 (MISS)
Solidago rugosa ssp. *aspera* (Aiton) Cronquist, *Louis* 7252 (MISS)
 **Sonchus asper* (L.) Hill, *McNair* 3 (USMS)
Stokesia laevis (Hill) Greene, *Gordon* 1040 (MMNS)
Symphotrichum adnatum (Nutt.) G.L. Nesom, *Nicholson* 163 (USMS)

Symphyotrichum concolor (L.) G.L. Nesom, *Nicholson 161* (USMS)
Symphyotrichum cordifolium (L.) G.L. Nesom, *McNair 1426* (USMS)
Symphyotrichum divaricatum (Nutt.) G.L. Nesom, *Sullivan s.n.* (MMNS)
Symphyotrichum drummondii var. *texanum* (Burgess) G.L. Nesom, *Leonard 10599* (MMNS)
Symphyotrichum dumosum (L.) G.L. Nesom, *Louis 13982* (MISS)
Symphyotrichum laeve var. *concinnum* Willd., *Louis 13993* (MISS)
Symphyotrichum patens (Aiton) G.L. Nesom, *Nicholson 160* (USMS)
Symphyotrichum pilosum Willd., *Louis 13956* (MISS)
Symphyotrichum simmondsii Small, *Louis 13983* (MISS)
Symphyotrichum undulatum (L.) G.L. Nesom, *Louis 13994* (MISS)
Symphyotrichum dumosum (L.) G.L. Nesom, *Nicholson 116* (USMS)
**Taraxacum officinale* G.H. Weber ex Wiggers, *McNair s.n.* (USMS)
Tetragonotheca helianthoides L., *McNair 584* (USMS)
Trilisa odoratissima (J.F. Gmel.) Cass., *McNair 1125* (USMS)
Verbesina alternifolia S.F. Blake, *Louis 13987* (MISS)
Verbesina virginica var. *virginica* L., *McNair 1185* (USMS)
Verbesina walteri Shinnery, *McNair 1335* (USMS)
Vernonia angustifolia Michx., *McNair 1097* (USMS)
Vernonia gigantea Trel., Branner & Coville, *McNair 1135* (USMS)
Xanthium strumarium L., *McNair 1380* (USMS)
**Youngia japonica* DC., *McNair 49* (USMS)

Berberidaceae

**Nandina domestica* Thunb., *McNair 72* (USMS)
Podophyllum peltatum L., *Purdy s.n.* (USMS)

Betulaceae

Alnus serrulata (Aiton) Willd., *McNair 11* (USMS)
Betula nigra L., *Jones 16335* (MISS)
Carpinus caroliniana Walter, *McNair 87* (USMS)
Ostrya virginiana K. Koch, *Jones 16345* (MISS)

Bignoniaceae

Bignonia capreolata L., *McNair 992* (USMS)
Campsis radicans (L.) Seem. ex Bureau, *McNair 902* (USMS)
Catalpa bignonioides Walt., *McNair 633* (USMS)

Boraginaceae

**Buglossoides arvensis* (L.) I.M. Johnst., *McNair 638* (USMS)
**Heliotropium indicum* L., *McNair s.n.* (USMS)

Lithospermum tuberosum Rugel ex DC., *McNair* 375 (USMS)
Lithospermum virginianum (L.) A. DC., *Jones* 5468 (MISS)
Myosotis macrosperma Engelm., *McNair* 380 (USMS)

Brassicaceae

Arabis patens Sull., *McNair* 388 (USMS)
Brassica nigra (L.) W.D.J. Koch, *McNair* 13 (USMS)
**Capsella bursa-pastoris* (L.) Medik., *McNair* 59 (USMS)
Cardamine concatenata (Michx.) O.Schwarz, *McNair* 1743 (USMS)
**Cardamine hirsuta* L., *McNair* 46 (USMS)
Cardamine pensylvanica Muhl. ex Willd., *McNair* 1599 (USMS)
**Lepidium didymum* L., *McNair* 1735 (USMS)
Lepidium virginicum L., *McNair* 47 (USMS)
**Raphanus raphanistrum* L., *McNair* 1844 (USMS)
Rorippa palustris ssp. *palustris* (L.) Besser, *McNair* 1753 (USMS)
Tomostima cuneifolia (Nuttall ex Torrey & A.Gray) Al-Shehbaz, M.Koch & Jordon-Thaden, *McNair* 1745 (USMS)

Burmanniaceae

Apteria aphylla (Nutt.) Barnhart ex Small, *McNair* 952 (USMS)
Burmannia capitata (J.F. Gmel.) Mart., *McNair* 1151 (USMS)

Buxaceae

Pachysandra procumbens Michx., *McNair* 1765 (USMS)

Cactaceae

Opuntia humifusa (Raf.) Raf., *Nicholson* 59 (USMS)

Campanulaceae

Campanula americana Mill., *McNair* 969 (USMS)
Lobelia cardinalis L., *McNair* 1188 (USMS)
Lobelia elongata Small, *Rogers* 4775 (MISS)
Lobelia puberula Michx., *Nicholson* 138 (USMS)
Lobelia spicata Lam., *Jones* 5496 (MISS)
Triodanis biflora (Ruiz & Pav.) Greene, *McNair* 1855 (USMS)
Triodanis perfoliata (L.) Nieuwl., *McNair* 119 (USMS)
Wahlenbergia marginata (Thunb.) A. DC., *McNair* 74 (USMS)

Cannabaceae

Celtis laevigata Willd., *McNair 825* (USMS)

Celtis occidentalis L., *McNair 606* (USMS)

Caprifoliaceae

**Lonicera japonica* Thunb., *Jones 16347* (MISS)

Lonicera sempervirens L., *McNair 226* (USMS)

Caryophyllaceae

Arenaria lanuginosa (Michx.) Rohrb., *Leonard 10871* (MMNS)

**Arenaria leptoclados* (Rchb.) Guss., *McNair 58* (USMS)

**Arenaria serpyllifolia* L., *Nicholson 24* (USMS)

**Cerastium glomeratum* Thuill., *McNair 28* (USMS)

**Dianthus armeria* L., *McNair 611* (USMS)

Drymaria cordata Willd. ex Schult., *McNair 679* (USMS)

**Petrorhagia prolifera* (L.) P.W. Ball & Heywood, *McNair 621* (USMS)

Sagina decumbens (Elliott) Torr. & A. Gray, *McNair 1760* (USMS)

Silene antirrhina L., *McNair 1848* (USMS)

Silene ovata Pursh, *McNair 1966* (USMS)

Silene regia Sims, *Leonard 10996* (MMNS)

Silene stellata (L.) W.T. Aiton, *Bailey s.n.* (MISS)

**Stellaria media* (L.) Vill., *McNair 21* (USMS)

Celastraceae

Euonymus americanus L., *McNair s.n.* (USMS)

Chrysobalanaceae

Licania michauxii Prance, *Alford 4245* (USMS)

Cistaceae

Crocanthemum carolinianum (Walter) Michx., *McNair 252* (USMS)

Crocanthemum rosmarinifolium (Pursh) Janchen, *McNair 816* (USMS)

Lechea mucronata Raf., *Nicholson 94* (USMS)

Lechea pulchella var. *ramosissima* (Hodgdon) Sorrie & Weakley, *McNair s.n.* (USMS)

Lechea sessiliflora Raf., *Nicholson 84* (USMS)

Lechea tenuifolia Michx., *McNair 615* (USMS)

Cleomaceae

**Tarenaya hassleriana* (Chodat) Iltis, *McNair 901* (USMS)

Clethraceae

Clethra alnifolia L., *Sullivan s.n.* (MMNS)

Convolvulaceae

Cuscuta gronovii Willd. ex J.A. Schultes, *McNair 1698* (USMS)

Cuscuta pentagona Engelm., *McNair s.n.* (USMS)

Dichondra carolinensis Michx., *McNair 196* (USMS)

Ipomoea cordatotriloba var. *cordatotriloba* Dennst., *McNair 859* (USMS)

Ipomoea hederacea Jacq., *McNair 1181* (USMS)

**Ipomoea hederifolia* L., *McNair 1375* (USMS)

Ipomoea lacunosa L., *McNair 1170* (USMS)

Ipomoea pandurata (L.) G. Mey., *McNair 1935* (USMS)

**Ipomoea quamoclit* L., *McNair 1174* (USMS)

**Jaquemontia tamnifolia* (L.) Griseb., *McNair 1077* (USMS)

Stylisma humistrata (Walter) Chapm., *McNair 692* (USMS)

Stylisma patens ssp. *patens* (Desr.) Myint, *Nicholson 70* (USMS)

Stylisma pickeringii var. *pickeringii* (Torr. ex M.A. Curtis) A. Gray, *Nicholson 64* (USMS)

Cornaceae

Cornus alternifolia L. f., *McNair 1037* (USMS)

Cornus asperifolia Michx., *Rosso 95099* (USMS)

Cornus drummondii C.A. Mey., *Ray 6993* (MISSA)

Cornus florida L., *McNair 270* (USMS)

Cornus stricta Lam., *McNair 600* (USMS)

Cucurbitaceae

Cayaponia quinqueloba (Raf.) Shinnars, *Sullivan s.n.* (MMNS)

Cucumis melo var. *texanus* (L.) Naud., *McNair 1197* (USMS)

Melothria pendula Sieber ex Cogn., *McNair 874* (USMS)

Cyrillaceae

Cyrilla racemiflora L., *Sullivan s.n.* (MMNS)

Dioscoreaceae

Dioscorea quaternata J.F. Gmel., *McNair 1919* (USMS)
Dioscorea villosa L., *McNair 682* (USMS)

Droseraceae

Drosera brevifolia Pursh, *Jones 5515* (MISS)
Drosera capillaris Poir., *McNair 1093* (USMS)
Drosera intermedia Hayne, *McNair 248* (USMS)

Ebenaceae

Diospyros virginiana L., *McNair 742* (USMS)

Ericaceae

Epigaea repens L., *McNair 148* (USMS)
Gaylussacia dumosa (Andrews) Torr. & A. Gray, *Jones 6632* (MISS)
Gaylussacia mosieri Small, *McNair 569* (USMS)
Gaylussacia nana (A. Gray) Small, *McNair 235* (USMS)
Kalmia latifolia L., *McNair 365* (USMS)
Lyonia ligustrina var. *foliosiflora* (Michx.) Fernald, *Ray 7004* (MISSA)
Lyonia lucida (Lam.) K. Koch, *Nicholson 57* (USMS)
Monotropa uniflora L., *McNair 1965* (USMS)
Oxydendrum arboreum (L.) DC., *McNair 737* (USMS)
Rhododendron canescens (Michx.) Sweet, *McNair 300* (USMS)
Vaccinium arboreum Marsh., *Nicholson 22* (USMS)
Vaccinium darrowii Camp, *McNair 1239* (USMS)
Vaccinium elliottii Chapm., *Nicholson 8* (USMS)
Vaccinium fuscatum Aiton, *Gordon 2497* (MMNS)
Vaccinium stamineum L., *Nicholson 6* (USMS)
Vaccinium tenellum Aiton, *Gordon 1042* (MMNS)
Vaccinium virgatum Aiton, *Jones 14032* (MISS)

Euphorbiaceae

Acalypha gracilens A. Gray, *McNair 917* (USMS)
Acalypha ostryifolia Riddell, *McNair 1187* (USMS)
Acalypha rhomboidea Raf., *Louis 11714* (MISS)
Acalypha virginica Wall., *Nicholson 80* (USMS)
Cnidioscolus stimulosus (Michx.) Engelm. & A. Gray, *McNair 500* (USMS)
Croton capitatus Michx., *McNair 1102* (USMS)
Croton glandulosus L., *McNair s.n.* (USMS)

Croton monanthogynus Michx., *McNair 893* (USMS)
Croton willdenowii G.L. Webster, *McNair 951* (USMS)
Ditrysinia fruticosa (Bartram) Govaerts & Frodin, *McNair 999* (USMS)
Euphorbia i apocynifolia Small. *McNair 1944* (USMS)
Euphorbia corollata L., *Sullivan s.n.* (MMNS)
Euphorbia cyathophora Murr., *McNair 1013* (USMS)
Euphorbia humistrata Engelm. ex A. Gray, *McNair 1320* (USMS)
Euphorbia hyssopifolia L., *McNair 1010* (USMS)
Euphorbia maculata L., *Jones 9680* (MISS)
Euphorbia nutans Lag., *McNair 894* (USMS)
Euphorbia pubentissima Michx., *Nicholson 121* (USMS)
Stillingia sylvatica ssp. *sylvatica* Garden ex Linnaeus, *McNair 704* (USMS)
Tragia cordata Michx., *Leonard 10399* (MMNS)
Tragia smallii Shinnery, *McNair 839* (USMS)
Tragia urens L., *Sullivan s.n.* (MMNS)
Tragia urticifolia Michx., *McNair 794* (USMS)
**Vernicia fordii* (Hemsl.) Airy-Shaw, *Nicholson 46* (USMS)

Fabaceae

Amorpha fruticosa L., *McNair 1279* (USMS)
Apios americana Medik., *McNair 1071* (USMS)
Baptisia alba R.Br., *McNair 564* (USMS)
Centrosema virginianum Griseb., *McNair 781* (USMS)
Cercis canadensis L., *McNair 89* (USMS)
Chamaecrista fasciculata (Michx.) Greene, *McNair 1207* (USMS)
Chamaecrista nictitans var. *nictitans* (L.) Moench, *McNair 1163* (USMS)
Crotalaria purshii DC., *McNair 634* (USMS)
Crotalaria rotundifolia Poir., *Nicholson 103* (USMS)
Crotalaria sagittalis L., *Jones 6613* (MISS)
**Crotalaria spectabilis* Roth, *McNair 1211* (USMS)
Dalea pinnata var. *trifoliata* (Chapm.) Barneby, *McNair 1366* (USMS)
Desmanthus illinoensis (Michx.) MacM. ex B.L. Robins. & Fern., *Jones 16396* (MISS)
Desmodium ciliare (Muhl. ex Willd.) DC., *s.n.* (MISSA)
Desmodium glabellum DC., *Rogers 4778* (MISS)
Desmodium lineatum DC., *McNair 1327* (USMS)
Desmodium nuttallii (Schindl.) B.G. Schub., *McNair 1226* (USMS)
Desmodium ochroleucum M.A. Curtis ex Canby, *McNair 1210* (USMS)
Desmodium paniculatum var. *paniculatum* (L.) DC., *Price* (MISSA)
Desmodium rotundifolium DC., *Leonard 10901* (USMS)
**Desmodium tortuosum* (Sw.) DC., *McNair 1391* (USMS)
Desmodium viridiflorum (L.) DC., *McNair 1044* (USMS)
Erythrina herbacea L., *McNair 643* (USMS)

Galactia minor Duncan, *Nicholson 81* (USMS)
Galactia regularis (L.) Britton, Sterns & Poggenb., *McNair 795* (USMS)
Galactia volubilis (L.) Britton, no collector given (MISSA)
Gleditsia triacanthos L., *Jones 11628* (MISS)
Hylodesmum nudiflorum L. (DC.), *McNair 1148* (USMS)
Hylodesmum pauciflorum (Nutt.) H. Ohashi & R.R. Mill, *McNair 968* (USMS)
 **Kummerowia striata* (Thunb.) Schindl., *Nicholson 97* (USMS)
Lathyrus latifolius L., *McNair 156* (USMS)
 **Lespedeza bicolor* Turcz., *McNair 1123* (USMS)
Lespedeza capitata Michx., *Jacob 64* (DSC)
 **Lespedeza cuneata* G.Don, *McNair 900* (USMS)
Lespedeza procumbens Michx., *Leonard 10909* (USMS)
Lespedeza repens (L.) W. Bartram, *McNair 1329* (USMS)
Lespedeza virginica Britton., *Jacob 60* (DSC)
Lupinus diffusus Nutt., *Mann s.n.* (MMNS)
Lupinus villosus Willd., *Mann s.n.* (MMNS)
 **Medicago arabica* (L.) Huds., *McNair 268* (USMS)
 **Medicago polymorpha* L., *McNair 1736* (USMS)
 **Melilotus alba* Medikus, *McNair 157* (USMS)
 **Melilotus indicus* (L.) All., *McNair 664* (USMS)
Mimosa microphylla Sm. ex Steud., *McNair 1897* (USMS)
Neptunia pubescens var. *pubescens* Benth., *McNair 1004* (USMS)
Orbexilum pedunculatum (Walter) Cory, *Jones 5499* (MISS)
Orbexilum simplex (Nutt. ex Torr. & A. Gray) Rydb., *McNair 754* (USMS)
 **Pueraria montana* (Lour.) Merr. var. *lobata* (Willd.) Maesen & S. Almeida, *McNair 994* (USMS)
Rhynchosia cytisoides (Bertol.) Wilbur, *Alford 4246* (USMS)
Rhynchosia minima (L.) DC., *McNair 1437* (USMS)
Rhynchosia reniformis DC., *McNair 590* (USMS)
Rhynchosia tomentosa Kurz, *McNair 822* (USMS)
 **Robinia pseudoacacia* L., *McNair 410* (USMS)
Senna marilandica (L.) Link, *McNair 1219* (USMS)
 **Senna obtusifolia* (L.) H.S.Irwin & Barneby, *McNair 1186* (USMS)
 **Senna occidentalis* (L.) Link, *Jones 9636* (MISS)
Sesbania herbacea (P. Mill.) McVaugh, *McNair 1325* (USMS)
 **Sesbania punicea* Benth., *McNair 1623* (USMS)
Strophostyles helvola (L.) Elliott, *McNair 1194* (USMS)
Strophostyles umbellata (Muhl. ex Willd.) Britton, *McNair 1108* (USMS)
Stylosanthes biflora (L.) B.S.P., *McNair 571* (USMS)
Tephrosia florida (F.G. Dietr.) C.E. Wood, *McNair 591* (USMS)
Tephrosia onobrychoides Nutt., *McNair 756* (USMS)
Tephrosia spicata (Walter) Torr. & A. Gray, *McNair 708* (USMS)
Tephrosia virginiana Pers., *McNair 577* (USMS)

**Trifolium arvense* Walter, *McNair 1858* (USMS)
 **Trifolium campestre* Schreb., *McNair 36* (USMS)
 **Trifolium dubium* Sibthorp, *Jones 4908* (MISS)
 **Trifolium incarnatum* L., *McNair 391* (USMS)
 **Trifolium resupinatum* L., *McNair 314* (USMS)
 **Trifolium vesiculosum* Savi, *McNair 674* (USMS)
Vicia caroliniana Walter, *McNair 514* (USMS)
 **Vicia grandiflora* Scop., *McNair 312* (USMS)
 **Vicia sativa* L., *McNair 301* (USMS)
 **Vicia tetrasperma* (L.) Schreb., *McNair 277* (USMS)
 **Vicia villosa* Roth, *McNair 56* (USMS)
 **Wisteria floribunda* (Willd.) DC., *McNair 698* (USMS)
Wisteria frutescens (L.) Poir., *McNair 565* (USMS)
 **Wisteria* × *formosa* Rehder, *McNair 316* (USMS)

Fagaceae

Castanea pumila (L.) Mill., *Nicholson 108* (USMS)
Fagus grandifolia Ehrh., *Jones 9669* (MISS)
Quercus alba L., *Jones 5522* (MISS)
Quercus austrina Small, *McNair 1512* (USMS)
Quercus falcata Michx., *McNair 1913* (USMS)
Quercus hemisphaerica Bartram ex Willd., *McNair 743* (USMS)
Quercus incana Bartram, *Alford 4247* (USMS)
Quercus laevis Walter, *Nicholson 10* (USMS)
Quercus laurifolia Michx., *McNair 701* (USMS)
Quercus lyrata Walter, *McNair 1278* (USMS)
Quercus margarettae (Ashe) Small, *McNair 810* (USMS)
Quercus marilandica Münchh., *McNair 1909* (USMS)
Quercus muehlenburgii Engelm., *McNair 805* (USMS)
Quercus nigra L., *McNair 1895* (USMS)
Quercus pagoda Raf., *McNair 991* (USMS)
Quercus phellos L., *McNair 408* (USMS)
Quercus shumardii Buckley, *McNair 1968* (USMS)
Quercus sinuata Walter, *Ray 8429* (MISSA)
Quercus stellata Wangenh., *McNair field observation*
Quercus velutina Lindl., *McNair 689* (USMS)

Fumariaceae

Corydalis halei (Small) Fernald & B.G. Schub., *McNair 107* (USMS)

Gelsemiaceae

Gelsemium rankinii Small, *McNair & Purdy 25* (USMS)

Gelsemium sempervirens Ait., *McNair 96* (USMS)

Gentianaceae

Bartonia paniculata ssp. *paniculata* (Michx.) Muhl., *McNair 1242* (USMS)

Gentiana saponaria L., *Gordon 3536* (MMNS)

Gentiana villosa L., *McNair 1592* (USMS)

Sabatia angularis (L.) Pursh, *McNair 884* (USMS)

Sabatia brachiata Elliot, *McNair 705* (USMS)

Sabatia campanulata (L.) Torr., *Ray 5050* (MISSA)

Sabatia campestris Nutt., *McNair 1083* (USMS)

Sabatia gentianoides Elliot, *McNair 1082* (USMS)

Sabatia macrophylla Hook., *Bailey 40* (MISSA)

Geraniaceae

Geranium carolinianum L., *McNair 42* (USMS)

**Geranium dissectum* L., *McNair 310* (USMS)

Geranium maculatum L., *Carmichael 98* (MISSA)

**Geranium molle* L., *McNair 172* (USMS)

Haloragaceae

**Myriophyllum aquaticum* (Vell.) Verdc. *McNair field identification*

Proserpinaca palustris L., *McNair 919* (USMS)

Hamamelidaceae

Hamamelis virginiana L., *Rosso 95139* (USMS)

Hydrangeaceae

Decumaria barbara L., *Hays 3136* (MMNS)

Hydrangea arborescens L., *McNair 1000* (USMS)

Hydrangea quercifolia Bartram, *McNair 806* (USMS)

Philadelphus inodorus L., *McNair 603* (USMS)

Hypericaceae

Hypericum brachyphyllum (Spach) Steud., *McNair 960* (USMS)

Hypericum crux-andreae (L.) Crantz, *McNair 1105* (USMS)

Hypericum frondosum Michx., *McNair 766* (USMS)

Hypericum galioides Lam., *McNair* 885 (USMS)
Hypericum gentianoides (L.) Britton, Sterns & Poggenb., *Nicholson* 157 (USMS)
Hypericum gymnanthum Engelm. & A. Gray, *McNair* 918 (USMS)
Hypericum hypericoides Crantz, *McNair* 1099 (USMS)
Hypericum mutilum var. *mutilum* L., *McNair* 1225 (USMS)
Hypericum prolificum L., *Ray* 6994 (MISSA)
Hypericum setosum L., *McNair* 1120 (USMS)
Hypericum suffruticosum P. Adams & N. Robson, *McNair* s.n. (USMS)
Hypericum walteri J.G. Gmel., *McNair* 1075 (USMS)

Iteaceae

Itea virginica L., *McNair* 544 (USMS)

Juglandaceae

Carya aquatica (Michx. f.) Nutt., *Jones* 16387 (MISS)
Carya cordiformis (Wangenh.) K. Koch, *McNair* 993 (USMS)
*?*Carya illinoensis* (Wangenh.) K. Koch, *Jones* 16379 (MISS)
Carya carolinae-septentrionalis (Ashe) Engl. & Graebn., *Ray* 6991 (MISSA)
Carya pallida (Ashe) Engl. & Graebn., *McNair* 1018 (USMS)
Carya tomentosa (Lam.) Nutt., *Alford field identification*
Juglans nigra L., *Jones* 9675 (MISS)

Lamiaceae

**Ajuga reptans* L., *McNair* 1752 (USMS)
Blephilia ciliata (L.) Benth., *McNair* 882 (USMS)
Callicarpa americana Lour., *McNair* 1901 (USMS)
Clinopodium georgianum Harper, *Ray* 5024 (MISS)
**Hedeoma hispida* Pursh, *McNair* 1862 (USMS)
Hyptis alata (Raf.) Shinnars, *McNair* 1081 (USMS)
**Hyptis mutabilis* Briq., *McNair* 1012 (USMS)
**Lamium amplexicaule* L., *McNair* 12 (USMS)
**Lamium purpureum* L., *McNair* 54 (USMS)
Lycopus virginicus L., *Wieland* 9609 (MMNS)
Monarda fistulosa var. *mollis* (L.) Benth., *McNair* 804 (USMS)
Monarda punctata L., *McNair* 1024 (USMS)
**Perilla frutescens* (L.) Britton, *McNair* 1868 (USMS)
Prunella vulgaris L., *McNair* 675 (USMS)
Pycnanthemum albescens Torr. & A. Gray, *Wieland* 8086 (MMNS)
Pycnanthemum muticum (Michx.) Pers., *McNair* 957 (USMS)
**Pycnanthemum tenuifolium* Schrad., *McNair* 753 (USMS)
Salvia azurea var. *grandiflora* Benth. in DC., *McNair* 1295 (USMS)

Salvia lyrata L., *McNair 66* (USMS)
Salvia urticifolia L., *Leonard 10898* (MMNS)
Scutellaria elliptica Muhl. ex Spreng., *McNair 642* (USMS)
Scutellaria incana Biehler, *McNair 635* (USMS)
Scutellaria integrifolia L., *Gordon 1039* (MMNS)
Scutellaria parvula Michx., *McNair 1839* (USMS)
Stachys floridana Shuttlw. ex Benth., *McNair 482* (USMS)
Trichostema dichotomum L., *McNair 1154* (USMS)

Lentibulariaceae

Utricularia inflata Walter, *McNair 361* (USMS)
Utricularia juncea Vahl, *McNair 1095* (USMS)
Utricularia subulata L., *McNair s.n.* (USMS)

Linaceae

Linum floridanum (Planch.) Trel., *Leonard 10927* (MMNS)
Linum medium var. *texanum* (Planch.) Fernald, *McNair 1019* (USMS)
Linum striatum Walter, *McNair 922* (USMS)
Linum virginianum L., *McNair 854* (USMS)

Linderniaceae

Micranthemum umbrosum (J.F. Gmel.) S.F. Blake, *McNair 555* (USMS)

Loganiaceae

Mitreola petiolata (J.F. Gmel.) Torr. & A. Gray, *McNair 852* (USMS)
Mitreola sessilifolia (J.F. Gmel.) G. Don, *McNair 1937* (USMS)
Spigelia marilandica L., *McNair 641* (USMS)

Lythraceae

Ammannia coccinea Rottb., *McNair 1182* (USMS)
**Cuphea carthagenensis* (Jacq.) J.F. Macbr., *McNair 723* (USMS)
Lythrum lanceolatum Elliot, *McNair 733* (USMS)
**Lagerstroemia indica* *McNair s.n.* (USMS)
Rotala ramosior (L.) Koehne, *McNair 1309* (USMS)

Malvaceae

Callirhoe papaver (Cav.) A. Gray, *McNair 764* (USMS)
Hibiscus aculeatus Walter, *McNair 850* (USMS)
Hibiscus moscheutos L., *McNair s.n.* (USMS)

Modiola caroliniana (L.) G. Don, *McNair 911* (USMS)
Sida rhombifolia var. *rhombifolia* L., *McNair 1165* (USMS)

Mazaceae

**Mazus pumilus* (Burm. f.) Steenis, *McNair 30* (USMS)

Melastomataceae

Rhexia alifanus Walter, *McNair 744* (USMS)
Rhexia lutea Walter, *McNair 747* (USMS)
Rhexia mariana var. *exalbida* Michx., *McNair 1023* (USMS)
Rhexia mariana var. *mariana* L., *McNair 748* (USMS)
Rhexia nashii Small, *McNair 879* (USMS)
Rhexia petiolata Walter, *McNair 1092* (USMS)
Rhexia virginica L., *McNair 1130* (USMS)

Meliaceae

**Melia azedarach* L., *McNair 610* (USMS)

Menispermaceae

Calyccarpum lyonii (Pursh) A. Gray, *McNair 1034* (USMS)
Cocculus carolinus (L.) DC., *McNair 872* (USMS)

Menyanthaceae

Nymphoides aquatica (J.F. Gmel.) Kuntze, *Ray 5056* (MISS)

Molluginaceae

**Mollugo verticillata* L., *McNair 1307* (USMS)

Montiaceae

Claytonia virginica var. *virginica* L., *McNair 255* (USMS)

Moraceae

Morus rubra L., *McNair 444* (USMS)

Myricaceae

Morella cerifera Small, *McNair 218* (USMS)
Morella inodora (Bartram) Small, *Nicholson 51* (USMS)

Nelumbonaceae

**Nelumbo lutea* Willd., *McNair 1381* (USMS)

Nyctaginaceae

Boerhavia erecta L., *McNair 1166* (USMS)

Nyssaceae

Nyssa biflora Walter, *McNair s.n.* (USMS)

Nyssa sylvatica Marshall, *Nicholson 45* (USMS)

Oleaceae

Chionanthus virginicus L., *McNair 358* (USMS)

Forestiera acuminata (Michx.) Poir., *Jones s.n.* (MISS)

Forestiera ligustrina (Michx.) Poir., *Sullivan s.n.* (MMNS)

Fraxinus americana L., *McNair 1046* (USMS)

Fraxinus pennsylvanica Marsh., *McNair 826* (USMS)

Fraxinus profunda (Bush) Bush, *McNair 561* (USMS)

**Ligustrum lucidum* Ait. f., *McNair 174* (USMS)

Ligustrum sinense Lour., *Jones 9674* (MISS)

Osmanthus americanus (L.) Knobl., *McNair 253* (USMS)

Onagraceae

Ludwigia alternifolia Walter, *Jones 14031* (MISS)

Ludwigia decurrens Walter, *McNair 1142* (USMS)

Ludwigia hirtella Raf., *Jones 16413* (MISS)

Ludwigia linearis Walter, *McNair 1127* (USMS)

Ludwigia microcarpa Michx., *McNair 1661* (USMS)

Ludwigia octovalvis (Jacq.) P.H.Raven, *McNair 1324* (USMS)

Ludwigia palustris (L.) Ell., *Jones 16408* (MISS)

Ludwigia pilosa Walter, *Jones 9724* (MISS)

Oenothera filiformis Spach, *Jones 9665* (MISS)

Oenothera fruticosa L., *Shoemake s.n.* (USMS)

Oenothera gaura L., *McNair 1162* (USMS)

Oenothera laciniata Hill, *McNair 1847* (USMS)

Oenothera linifolia Nutt., *McNair 453* (USMS)

Oenothera simulans Michx., *McNair 1056* (USMS)

**Oenothera speciosa* Nutt., *McNair 309* (USMS)

Oenothera tetragona Roth, *Jones 5498* (MISS)

Orobanchaceae

Agalinis aphylla (Nutt.) Raf., *Leonard 11012* (MMNS)
Agalinis plukenetii (Elliott) Raf., *Rogers 4754* (MISS)
Agalinis pulchella Pennell, *McNair s.n.* (USMS)
Agalinis purpurea (L.) Pennell, *Leonard 10895* (USMS)
Agalinis setacea (J.F. Gmel.) Raf., *Nicholson 159* (USMS)
Agalinis tenuifolia (Vahl) Raf., *Leonard 10604* (MMNS)
Buchnera floridana Gandog., *McNair 619* (USMS)
Epifagus virginiana (L.) W. Bartram, *McNair 1643* (USMS)
Pedicularis canadensis L., *McNair 320* (USMS)
Aureolaria flava (L.) Farw., *McNair 1259* (USMS)
Aureolaria pectinata (Nutt.) Pennell, *McNair 821* (USMS)
Aureolaria virginica (L.) Pennell, *Rogers 4750* (MISS)

Oxalidaceae

**Oxalis articulata* Savign., *McNair 52* (USMS)
Oxalis dillenii Jacq., *McNair 1856* (USMS)
**Oxalis texana* (Small) Fedde, *McNair 1780* (USMS)
Oxalis violacea L., *McNair 289* (USMS)

Papaveraceae

Sanguinaria canadensis L., *McNair 989* (USMS)

Parnassiaceae

Lepuropetalon spathulatum Elliott, *McNair 1783* (USMS)

Passifloraceae

Passiflora incarnata L., *McNair 697* (USMS)
Passiflora lutea L., *McNair 997* (USMS)

Penthoraceae

Penthorum sedoides L., *McNair 1624* (USMS)
Mimulus alatus Aiton, *McNair 1189* (USMS)
Phryma leptostachya L., *McNair 898* (USMS)

Phyllanthaceae

Phyllanthus caroliniensis Walter, *McNair 1413* (USMS)
**Phyllanthus urinaria* L. *McNair field identification*

Phytolaccaceae

Phytolacca americana L., *McNair 687* (USMS)

Plantaginaceae

Bacopa caroliniana (Walter) B.L. Rob., *McNair 1388* (USMS)

Callitriche heterophylla var. *heterophylla* Pursh, *McNair 1654* (USMS)

Leucospora multifida (Michx.) Nutt., *McNair 732* (USMS)

Nuttallanthus canadensis (L.) D.A. Sutton, *McNair 50* (USMS)

Penstemon laxiflorus Pennell, *McNair 583* (USMS)

Penstemon laevigatus Aiton, *Jones 4931* (MISS)

Plantago aristata Michx., *Alford 4243* (USMS)

Plantago heterophylla Nutt., *McNair 1828* (USMS)

**Plantago lanceolata* L., *McNair 1864* (USMS)

**Plantago major* L., *McNair 44* (USMS)

Plantago virginica L., *McNair 1865* (USMS)

Sophranthe pilosa (Michx.) Small, *McNair 814* (USMS)

**Veronica arvensis* L., *McNair 39* (USMS)

**Veronica hederifolia* L., *McNair 1756* (USMS)

Veronica peregrina L., *McNair 1737* (USMS)

**Veronica persica* Poir., *McNair 61* (USMS)

Platanaceae

Platanus occidentalis L., *Jeter 22* (USMS)

Polemoniaceae

Phlox amoena Sims, *McNair 83* (USMS)

Phlox carolina L., *McNair 702* (USMS)

Phlox divaricata L., *McNair 285* (USMS)

**Phlox drummondii* Hook., *McNair 587* (USMS)

Phlox glaberrima L., *McNair 765* (USMS)

Phlox pilosa L., *McNair 104* (USMS)

**Phlox subulata* L., *McNair 276* (USMS)

Polygalaceae

Asemeia grandiflora (Walter) Small, *McNair 1896* (USMS)

Polygala boykinii Nutt., *McNair 594* (USMS)

Polygala cruciata L., *McNair 844* (USMS)

Polygala incarnata L., *McNair 649* (USMS)

Polygala lutea L., *McNair 472* (USMS)

Polygala mariana Mill., *McNair* 776 (USMS)
Polygala nana (Michx.) DC., *McNair* 2 (USMS)
Polygala ramosa Elliot, *McNair* 930 (USMS)
Polygala verticillata L., *McNair* 767 (USMS)

Polygonaceae

Brunnichia ovata (Walter) Shinnars, *McNair* 1068 (USMS)
Fallopia scandens (L.) Holub, *McNair* 1425 (USMS)
Persicaria glabra (Willd.) G. Maza, *McNair* 1223 (USMS)
Persicaria hydropiperoides (Michx.) Small, *McNair* 866 (USMS)
**Persicaria longiseta* (Bruijn) Kitag., *McNair* 1195 (USMS)
Persicaria pensylvatica (L.) G. Maza, *McNair* 1397 (USMS)
Persicaria setacea (Baldw.) Small, *McNair* 979 (USMS)
Persicaria virginiana (L.) Gaertn., *McNair* 1184 (USMS)
**Rumex crispus* ssp. *crispus* L., *McNair* 65 (USMS)
**Rumex hastatulus* Baldw., *McNair* 125 (USMS)
**Rumex pulcher* L., *McNair* 630 (USMS)

Portulacaceae

**Portulaca amilis* Speg., *McNair* 1299 (USMS)
Portulaca pilosa L., *McNair* 726 (USMS)

Primulaceae

Lysimachia ciliata L., *Sullivan s.n.* (MMNS)
Samolus parviflorus Raf., *McNair* 384 (USMS)

Ranunculaceae

Actaea pachypoda Elliot, *McNair* 379 (USMS)
Anemone americana (DC.) H. Hara, *McNair* 84 (USMS)
Anemone berlandieri Pritz., *Leonard* 10741 (MMNS)
Clematis crispa L., *McNair* 484 (USMS)
Clematis glaucophylla Small, *McNair* 1933 (USMS)
**Clematis terniflora* DC., *McNair* 1176 (USMS)
Clematis virginiana L., *Leonard* 10422 (MMNS)
Ranunculus carolinianus DC., *McNair* 393 (USMS)
Ranunculus fascicularis Spreng., *McNair* 1746 (USMS)
**Ranunculus parviflorus* L., *McNair* 1751 (USMS)
Ranunculus pusillus Poir., *McNair* 1734 (USMS)
Ranunculus recurvatus var. *recurvatus* Poir., *McNair* 378 (USMS)
**Ranunculus sardous* Crantz, *McNair* 720 (USMS)

Ranunculus scleratus L., *McNair 109* (USMS)
Thalictrum debile Buckley, *Leonard 10740* (MMNS)
Thalictrum thalictroides (L.) Eames & B. Boivin, *Leonard 10744* (MMNS)

Rhamnaceae

Berchemia scandens (Hill) K. Koch, *McNair 563* (USMS)
Ceanothus americanus var. *intermedius* (Pursh) Torr. & A. Gray, *McNair 637* (USMS)
Frangula caroliniana (Walter) A. Gray, *McNair 658* (USMS)

Rosaceae

Agrimonia incisa Torr. & A. Gray, *Leonard 11010* (MMNS)
Agrimonia microcarpa Wallr., *Leonard 10997* (MMNS)
Agrimonia pubescens Wallr., *Leonard 9759* (MMNS)
Amelanchier arborea (Michx. f.) Fernald, *McNair 1744* (USMS)
Aronia arbutifolia (L.) Pers., *McNair 214* (USMS)
Crataegus alabamensis var. *florens* Beadle, *McNair 809* (USMS)
Crataegus marshallii Ettl., *Jones 5556* (MISS)
Crataegus triflora Chapm., *Wieland 9886* (MMNS)
Crataegus uniflora Münchh., *McNair 1961* (USMS)
Malus angustifolia (Aiton) Michx., *McNair 225* (USMS)
**Potentilla indica* (Andrews) T. Wolf, *McNair 381* (USMS)
Prunus americana Marsh., *Jones 16389* (MISS)
Prunus caroliniana Ait., *McNair 127* (USMS)
Prunus mexicana S. Watson, *Jones 9645* (MISS)
Prunus serotina Ehrh., *McNair 188* (USMS)
Prunus umbellata Ell., *McNair 287* (USMS)
Pyracantha atalantioides (Hance) Stapf, *McNair 596* (USMS)
**Pyrus communis* L., *McNair 696* (USMS)
**Rosa laevigata* Michx., *McNair 403* (USMS)
Rubus pensilvanicus Poir., *McNair 331* (USMS)
Rubus trivialis Michx., *McNair 1910* (USMS)
**Spiraea thunbergii* Siebold ex Blume, *McNair 161* (USMS)

Rubiaceae

Cephalanthus occidentalis L., *McNair s.n.* (USMS)
Diodia virginiana L., *McNair 1904* (USMS)
Diodia teres Walt., *McNair 1939* (USMS)
Galium aparine L., *McNair 43* (USMS)
Galium circaezans Michx., *Leonard 10880* (MMNS)
Galium orizabense ssp. *laevicaule* (Weath. & S.F. Blake) Dempster, *McNair 529* (USMS)

Galium pilosum var. *puncticulosum* (Michx.) Torr. & A. Gray, *McNair* 773 (USMS)
**Galium sherardia* E.H.L. Krause, *McNair* 1866 (USMS)
Galium tinctorium (L.) Scop., *Jones* 4900 (MISS)
Hedyotis nigricans (Lam.) Fosberg, *Sullivan s.n.* (MMNS)
Houstonia micrantha (Shinners) Terrell, *McNair* 113 (USMS)
Houstonia purpurea var. *purpurea* L., *McNair* 700 (USMS)
Houstonia pusilla Schoepf, *McNair* 29 (USMS)
Houstonia rosea (Raf.) Terrell, *McNair* 1732 (USMS)
Houstonia tenuifolia Nutt., *McNair* 793 (USMS)
Mitchella repens L., *McNair* 480 (USMS)
**Richardia brasiliensis* Gomes, *McNair* 1212 (USMS)
**Richardia humistrata* (Cham. & Schltld.) Schult. & Schult. f., *Sullivan s.n.* (MMNS)
**Richardia scabra* L., *McDaniel* 30851 (MMNS)

Rutaceae

**Citrus trifoliata* L., *McNair* 395 (USMS)
Ptelea trifoliata L., *Herring s.n.* (MISS)
Zanthoxylum clava-herculis Lour., *McNair* 1218 (USMS)

Salicaceae

Populus deltoides Bartr. ex Marsh., *Jones* 11630 (MISS)
Salix eriocephala Michx., *Leonard* 10404 (MMNS)
Salix nigra Marsh., *McNair* 209 (USMS)

Sapindaceae

Acer leucoderme Small, *McNair* 1074 (USMS)
Acer negundo L., *McNair* field identification
Acer rubrum Wats., *McNair* 16 (USMS)
Aesculus pavia L., *McDaniel* 21174 (MMNS)

Sapotaceae

Sideroxylon lycioides L., *Leonard* 10391 (MMNS)

Sarraceniaceae

Sarracenia alabamensis ssp. *wherryi* (F.W. Case & R.B. Case) Schnell, *Gordon* 2500 (MMNS)
Sarracenia alata Alph. Wood, *McNair* 353 (USMS)
Sarracenia leucophylla Raf., *Gordon* 2506 (MMNS)
Sarracenia psittacina Michx., *McNair* 568 (USMS)

Scrophulariaceae

Mecardonia acuminata (Walter) Small, *Jones 14006* (MISS)

Scrophularia marilandica L., *McNair 1200* (USMS)

**Verbascum thapsus* L., *McNair 803* (USMS)

Simaroubaceae

**Ailanthus altissima* (P. Mill.) Swingle, *McNair 1460* (USMS)

Solanaceae

**Datura stramonium* L., *Jones 9638* (MISS)

Physalis angulata L., *McDaniel 30826* (MMNS)

Physalis heterophylla Nees, *Wieland 9904* (MMNS)

Physalis virginiana P. Mill., *McNair 582* (USMS)

Solanum carolinense L., *McNair 1898* (USMS)

Solanum ptychanthum Dunal, *McNair 1666* (USMS)

Staphyleaceae

Staphylea trifolia L., *Sullivan s.n.* (MMNS)

Styracaceae

Halasia diptera var. *diptera* Ellis, *McNair 330* (USMS)

Halesia carolina L., *Purdy s.n.* (USMS)

Styrax grandifolius Aiton, *Wieland 8085* (MMNS)

Symplocaceae

Symplocos tinctoria (L.) L'Hér., *McNair 245* (USMS)

Tetrachondraceae

Polypremum procumbens L., *Alford 4244* (USMS)

Theaceae

Stewartia malacodendron L., *Sullivan s.n.* (MMNS)

Thymelaeaceae

Dirca palustris L., *McNair 1741* (USMS)

Tiliaceae

Tilia americana L., *McNair 699* (USMS)

Ulmaceae

Planera aquatica J.F. Gmel., *McNair 1513* (USMS)

Ulmus alata Michx., *Jones 16376* (MISS)

Ulmus americana Planch., *Jones 9679* (MISS)

Ulmus rubra Muhl., *McNair 1336* (USMS)

Ulmus serotina Sarg., *Leonard 10405* (MMNS)

Urticaceae

Boehmeria cylindrica (L.) Sw., *McNair 851* (USMS)

Pilea pumila (L.) A. Gray, *McNair s.n.* (USMS)

Valerianaceae

Valerianella radiata Duf., *McNair 298* (USMS)

Verbenaceae

**Glandularia pulchella* (Sweet) Troncoso, *McNair 342* (USMS)

Phyla lanceolata (Michx.) Greene, *McNair 725* (USMS)

Phyla nodiflora (L.) Greene, *McNair 1330* (USMS)

**Verbena brasiliensis* Vell., *McNair 1854* (USMS)

**Verbena halei* Small, *McNair 1870* (USMS)

**Verbena rigida* Spreng., *McNair 1863* (USMS)

Verbena simplex Lehm., *McNair 797* (USMS)

Violaceae

**Viola arvensis* Murray, *McNair 55* (USMS)

Viola bicolor Pursh, *McNair 27* (USMS)

Viola hirsutula Brainerd, *McNair 231* (USMS)

Viola palmata L., *McNair 292* (USMS)

Viola pedata L., *McNair 1* (USMS)

Viola primulifolia L., *McNair 7* (USMS)

Viola septemloba LeConte, *McNair 237* (USMS)

Viola sororia Willd, *McNair 149* (USMS)

Viola triloba var. *dilatata* (Elliott) Brainerd, *McNair 511* (USMS)

Viola villosa Walter, *McNair 272* (USMS)

Viola walteri House, *McNair 85* (USMS)

Viscaceae

Phoradendron leucarpum ssp. *leucarpum* (Raf.) Reveal & M.C. Johnston, *McNair 1331* (USMS)

Vitaceae

Ampelopsis arborea (L.) Koehne, *McNair 1339* (USMS)

Ampelopsis cordata Michx., *McNair 1915* (USMS)

Parthenocissus quinquefolia (L.) Planch., *Jones 5539* (MISS)

Vitis aestivalis F.Michx., *Nicholson 118* (USMS)

Vitis rotundifolia Michx., *Nicholson 15* (USMS)

Vitis vulpina L., *Jones 7689* (MISS)

REFERENCES

- Alford, M.H. 2001. The vascular flora of Amite County, Mississippi. *Sida* 19: 645–699.
- Arguez A., I. Durre, S. Applequist, M. Squires, R. Vose, X. Yin, and R. Bilotta. 2010. NOAA's U.S. Climate Normals (1981–2010). Waynesboro 2 W, MS US
GHCND:USC00229439. NOAA National Climatic Data Center.
DOI:10.7289/V5PN93JP.
- Chapman, S.S, G.E. Griffith, J.M. Omernik, J.A. Comstock, M.C. Beiser and D.Johnson. 2004. Ecoregions of Mississippi, (color poster with map, descriptive text, summary tables, and photographs): Reston, Virginia, U.S. Geological Survey (map scale 1:1,000,000).
- Jose, S., E.J. Jokela, and D.L. Miller 2006. The longleaf pine ecosystem: Ecology, silviculture, and restoration (Springer series on environmental management). New York: Springer.
- Majure, L.C., J. Hill, C. Doffitt, T.C. Majure. 2013. The Vascular Flora of Lauderdale County, Mississippi, U.S.A. *Rhodora* 113: 365–418.
- McNair, D.M., and M.H. Alford. 2014. *Blyxa aubertii* (Hydrocharitaceae) new to Mississippi, U.S.A. *J. Bot. Res. Inst. Texas* 8: 267–270.
- Nicholson, B. 2012. Flora of the Gopher Farm Sandhill, Wayne County, Mississippi. Undergraduate Honors Thesis. The University of Southern Mississippi.
http://aquila.usm.edu/honors_theses/82/
- Noss, R. F. 2012. *Forgotten grasslands of the South natural history and conservation*. Washington: Island Press.
- Noss, R.F., W.J. Platt, B.A. Sorrie, A.S. Weakley, D.B. Means, J. Costanza, and R.K. Peet. 2014. How global biodiversity hotspots may go unrecognized: lessons from the North American coastal plain. *Diversity Distrib.* 2014:1–9.
- Philly, K.D. 2013. The Vascular Flora of Choctaw County, Mississippi, U.S.A. Masters Thesis. Mississippi College.
- Sorrie, B.A., and A.S. Weakley. 2001. Coastal Plain vascular plant endemics: phytogeographic patterns. *Castanea* 66: 50–82.
- Southeast Regional Network of Expertise and Collections (SERNEC). 2015.
<http://sernecportal.org/portal/index.php>

Taylor, C., N.T. Leubke, D.M. Britton, R. J. Hickey, D.F. Brunton. 1993. Isoëtaceae. In: Flora of North America Editorial Committee, eds. 1993+. Flora of North America North of Mexico. 18+ vols. New York and Oxford. Vol. 2.

Thompson, David E. 2011. Geologic Map of Mississippi (after Alvin R. Bicker Jr. 1969). Mississippi Office of Geology.

United States Census Bureau. 2010. State & County Quickfacts: Wayne County, M.S. <http://quickfacts.census.gov>.

United States Department of Agriculture, Natural Resources Conservation Service (USDA, NRCS). 2009. Soil Survey of Wayne County, Mississippi. http://soils.usda.gov/survey/printed_surveys/

Weakley, A.S. 2015. Flora of the southern and mid-Atlantic states, May 2015 version (<http://herbarium.unc.edu/flora.htm>). University of North Carolina Herbarium, North Carolina Botanical Garden, University of North Carolina at Chapel Hill, Chapel Hill, North Carolina.